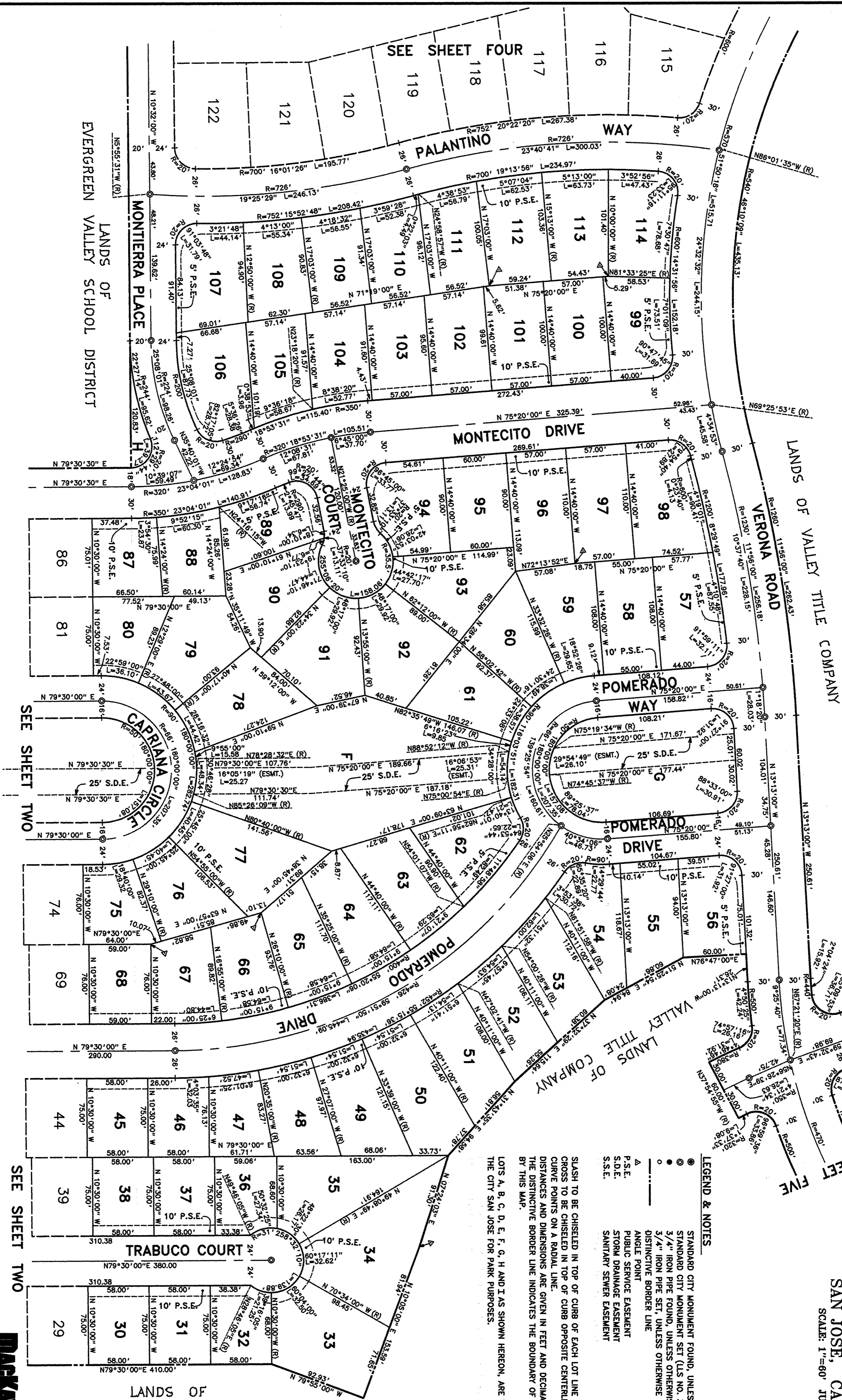


# BASIS OF BEARINGS

THE BEARING N10°31'10"W ALONG THE NORTHEASTERLY BOUNDARY LINE OF TRACT NO. 8517, RECORDED IN BOOK 654 OF MAPS AT PAGES 25-26, SANTA CLARA COUNTY RECORDS, AND AS FOUND MONUMENTED, WAS TAKEN AS THE BASIS OF BEARINGS SHOWN HEREON.

# TRACT NO. 8756

CONSISTING OF FIVE SHEETS  
BEING A PORTION OF THE RANCHO  
YERBA BUENA Y SOCAYRE  
AND LYING WITHIN THE CITY OF  
SAN JOSE, CALIFORNIA  
SCALE: 1"=60' JUNE, 1995



## LEGEND & NOTES

- STANDARD CITY MONUMENT FOUND, UNLESS OTHERWISE NOTED
- STANDARD CITY MONUMENT SET (I.L.S. NO. 3656)
- 3/4" IRON PIPE FOUND, UNLESS OTHERWISE NOTED
- 3/4" IRON PIPE SET, UNLESS OTHERWISE NOTED (I.L.S. NO. 3656)
- DISTINCTIVE BORDER LINE
- ▲ ANGLE POINT
- ▲ PUBLIC SERVICE EASEMENT
- ▲ STORM DRAINAGE EASEMENT
- ▲ SANITARY SEWER EASEMENT

SLASH TO BE CHISELED IN TOP OF CURB OF EACH LOT LINE PRODUCED.  
CROSS TO BE CHISELED IN TOP OF CURB OPPOSITE CENTERLINE MONUMENT  
CURVE POINTS ON A RADIAL LINE.  
DISTANCES AND DIMENSIONS ARE GIVEN IN FEET AND DECIMALS THEREOF.  
THE DISTINCTIVE BORDER LINE INDICATES THE BOUNDARY OF LAND SUBDIVIDED  
BY THIS MAP.

LOTS A, B, C, D, E, F, G, H AND I AS SHOWN HEREON, ARE TO BE CONVEYED TO  
THE CITY SAN JOSE FOR PARK PURPOSES.