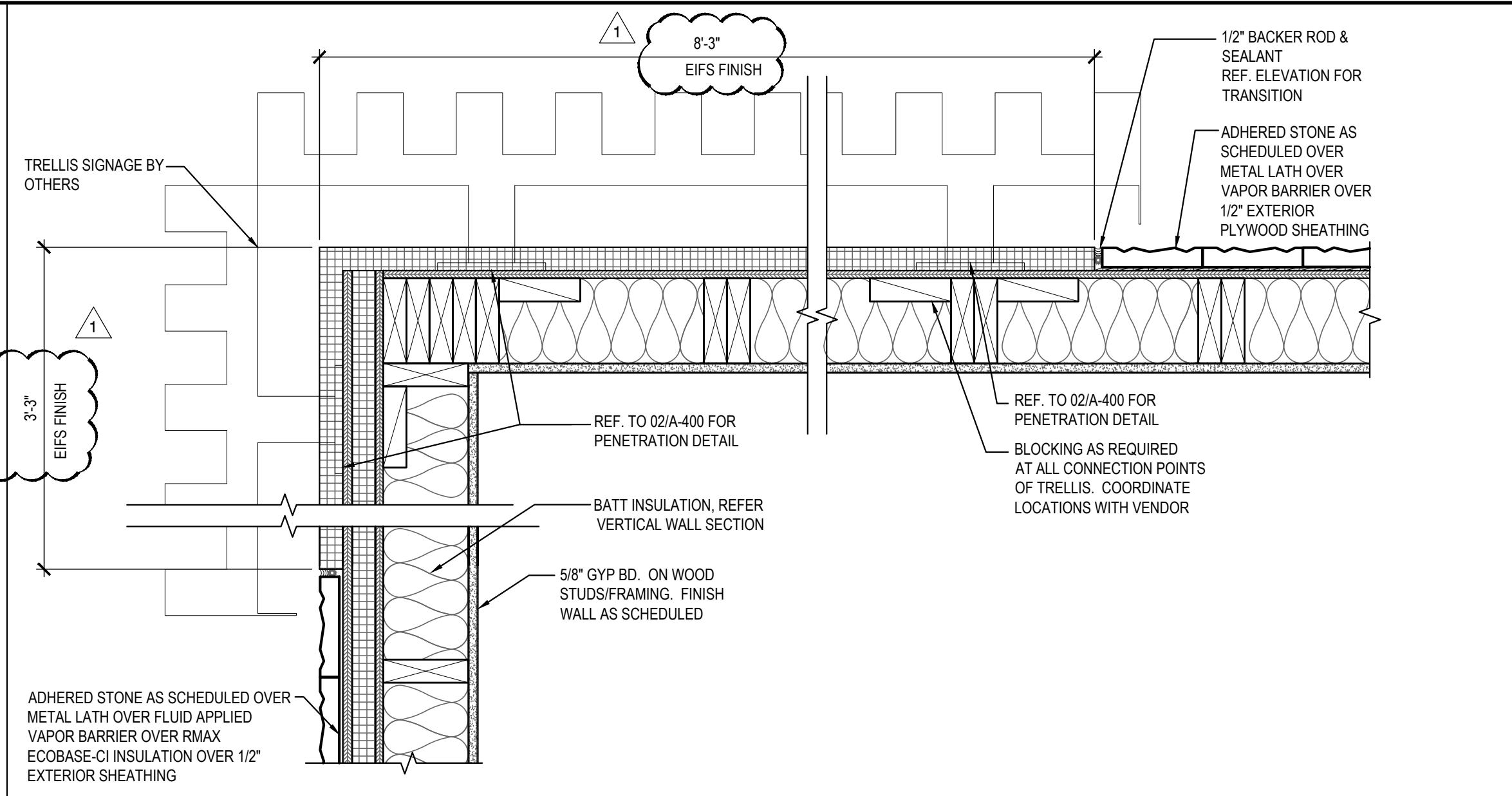


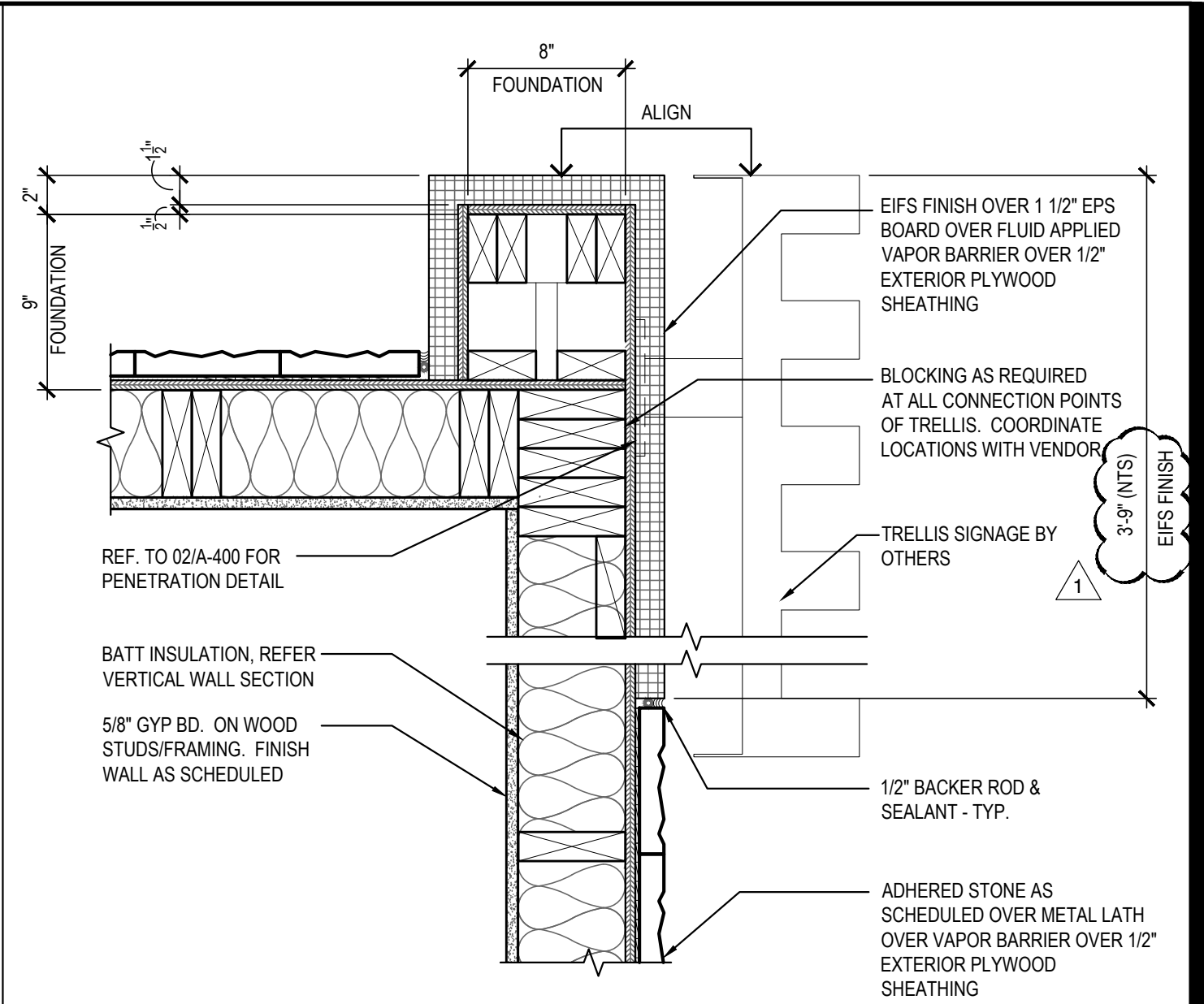
PLAN SECTION/DETAIL 09

Scale= 1 1/2" = 1'-0" A-401



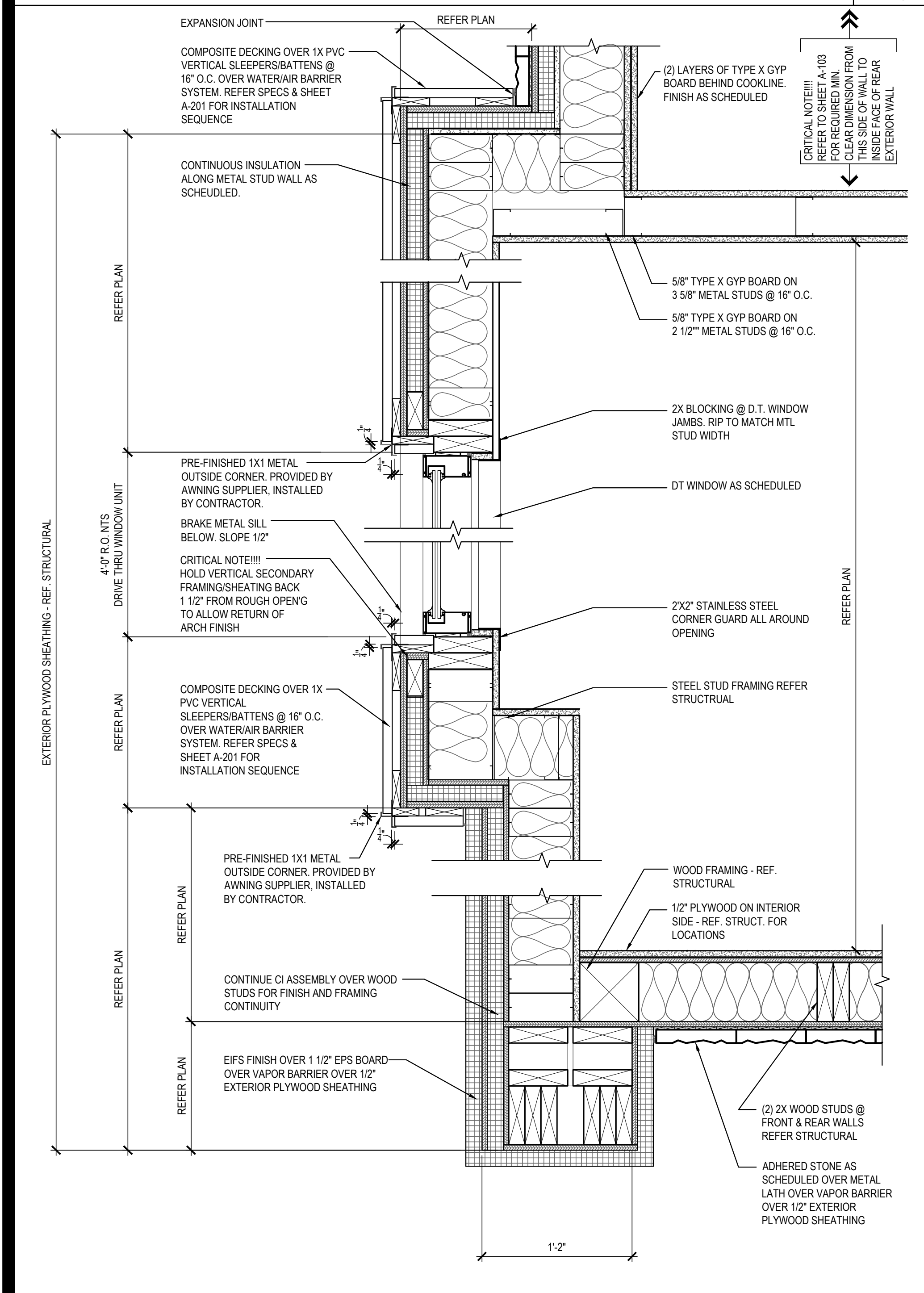
PLAN SECTION/DETAIL (REAR D.T. CORNER) 05

Scale= 1 1/2" = 1'-0" A-401



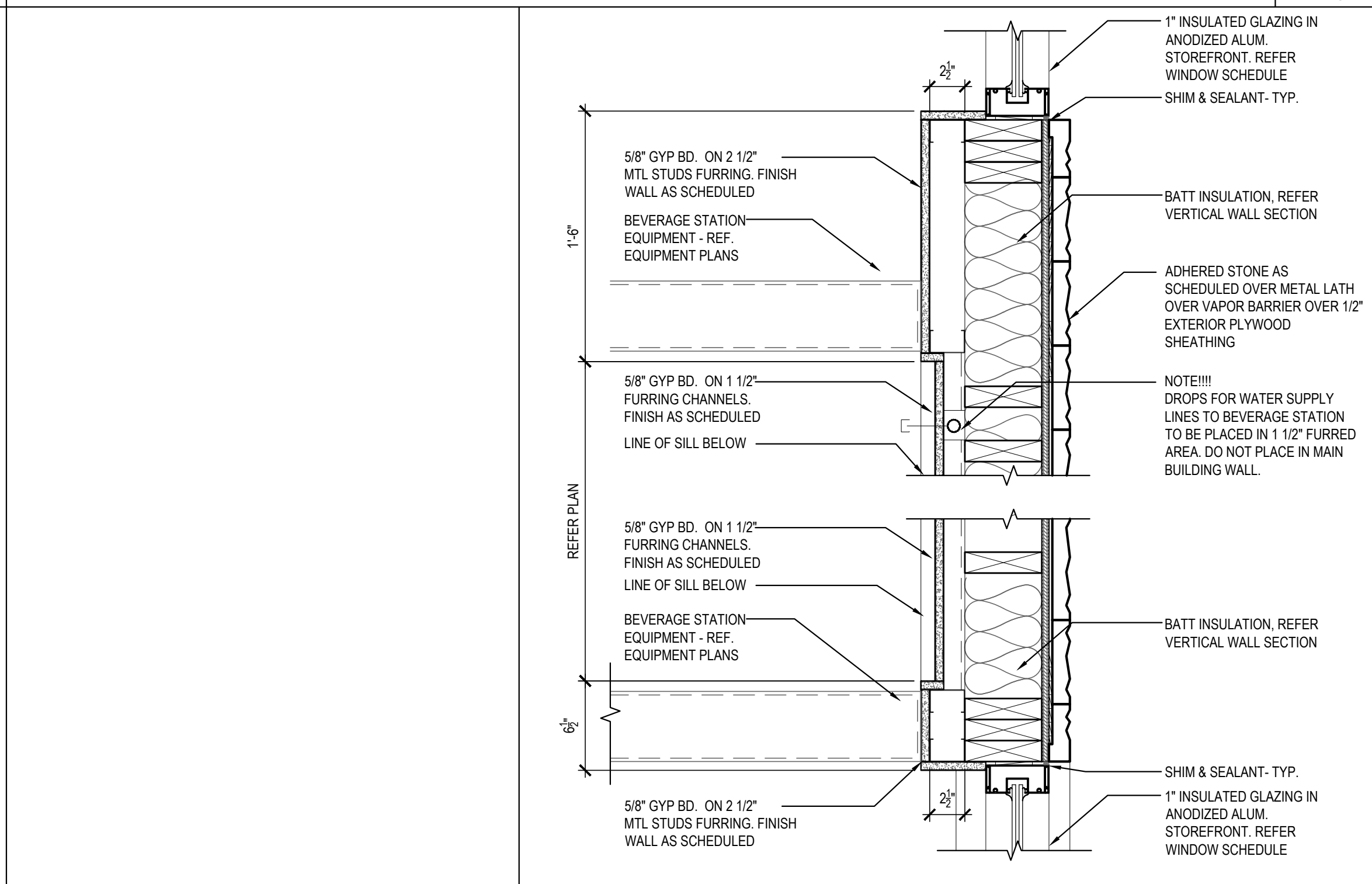
PLAN SECTION/DETAIL (REAR CORNER) 03

Scale= 1 1/2" = 1'-0" A-401



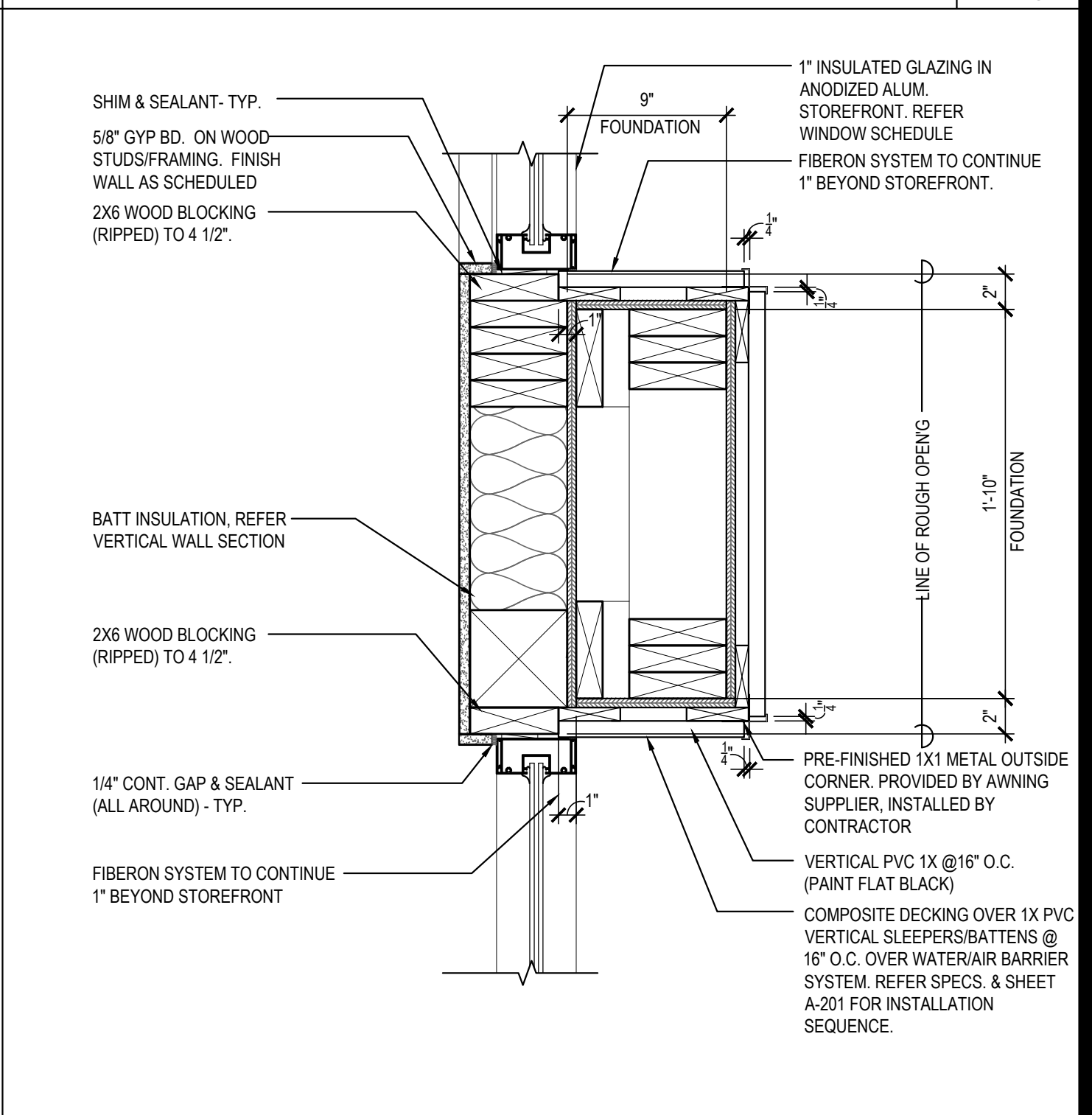
PLAN SECTION/DETAIL 08

Scale= 1 1/2" = 1'-0" A-401



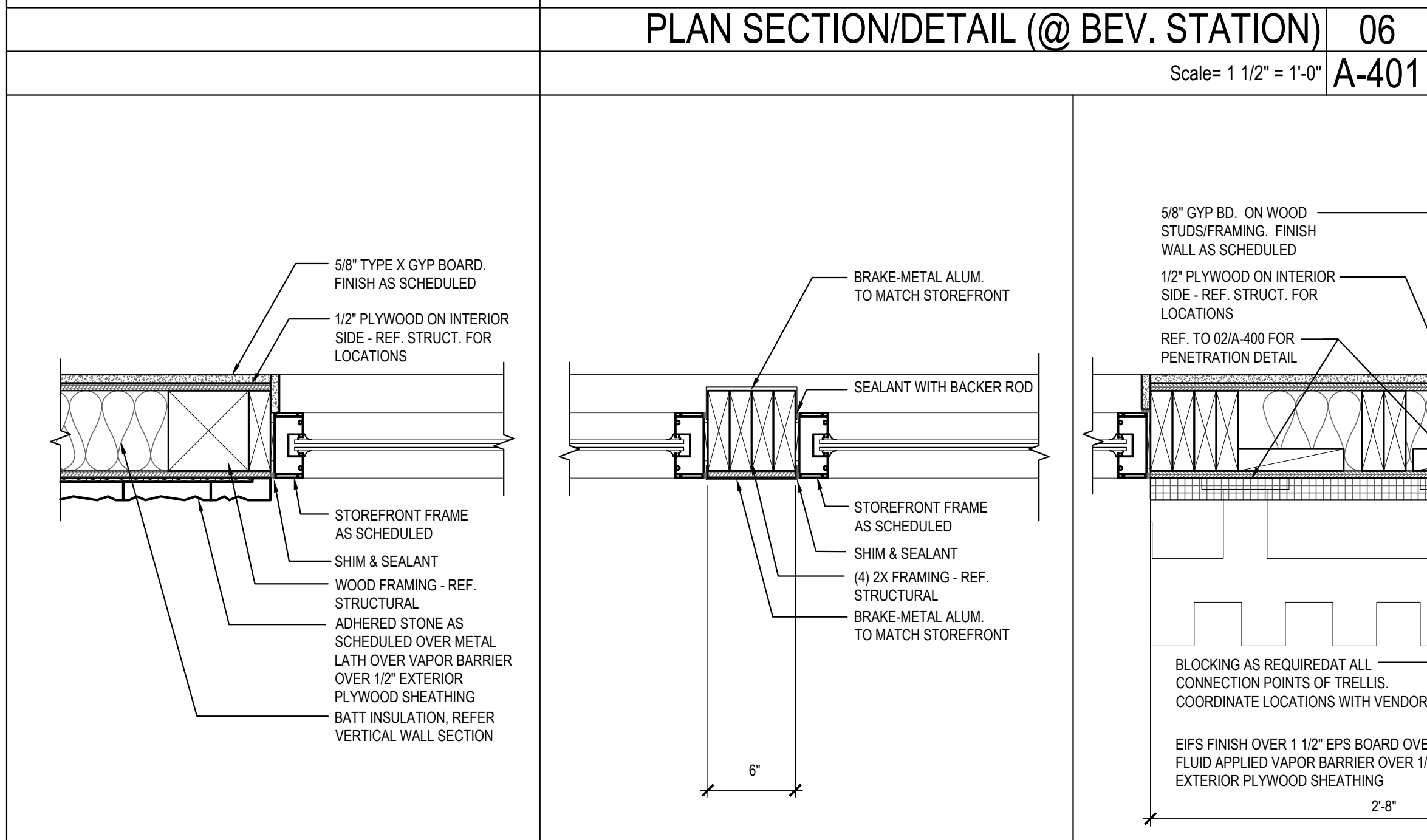
PLAN SECTION/DETAIL (@ BEV. STATION) 06

Scale= 1 1/2" = 1'-0" A-401



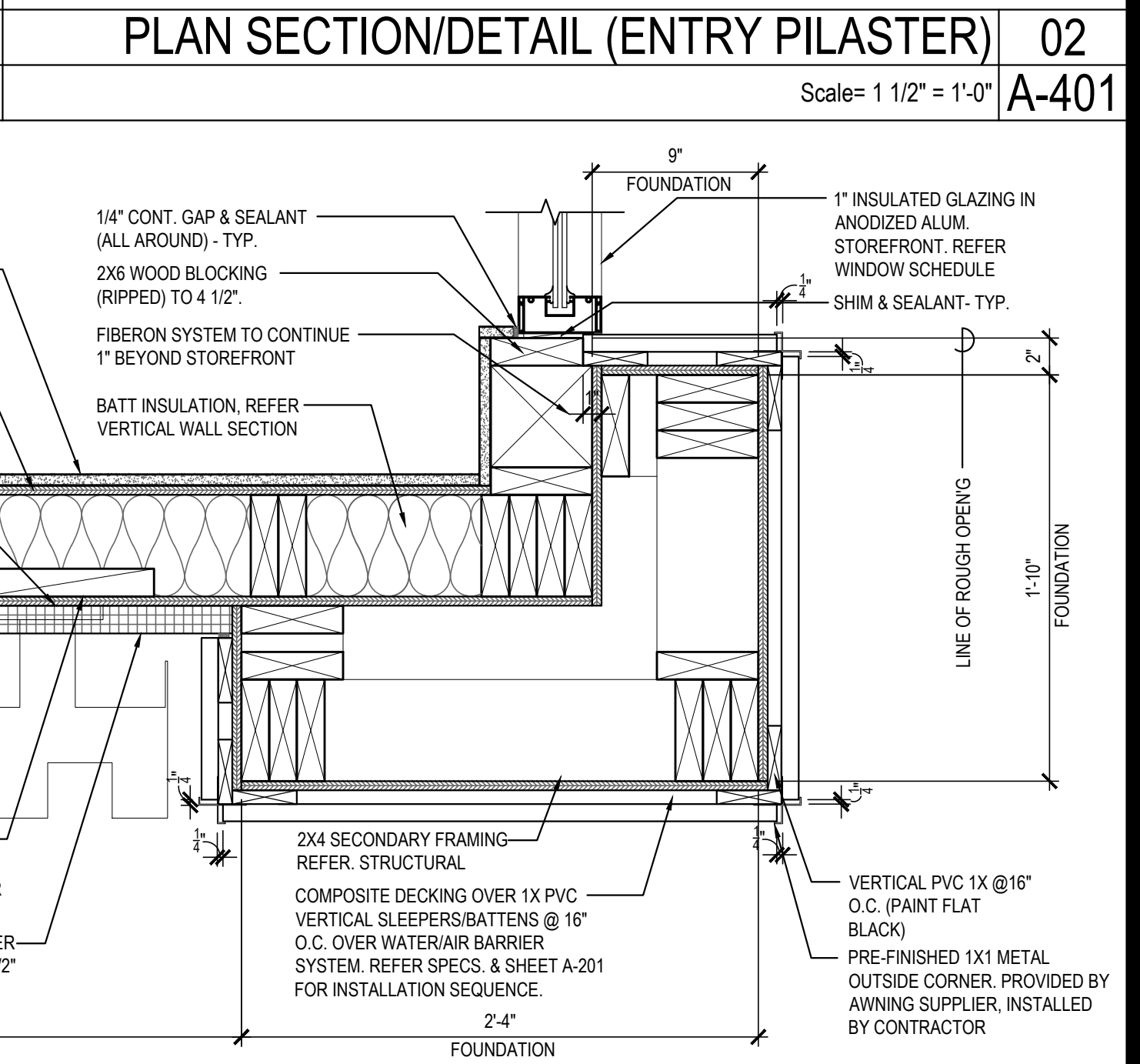
PLAN SECTION/DETAIL (ENTRY PILASTER) 02

Scale= 1 1/2" = 1'-0" A-401



PLAN SECTION/DETAIL 07

Scale= 1 1/2" = 1'-0" A-401



PLAN SECTION/DETAIL (ENTRY CORNER) 01

Scale= 1 1/2" = 1'-0" A-401



PANDA EXPRESS, INC.
1683 Walnut Grove Ave.
Rosemead, California
91770
Telephone: 626.799.9898
Facsimile: 626.372.8288

All ideas, designs, arrangements and plans indicated or represented by this drawing are the property of Panda Express Inc. and were created for use on this specific project. None of these ideas, designs, arrangements or plans may be used by or disclosed to any person, firm, or corporation without the written permission of Panda Express Inc.

REVISIONS:

OWNER REVISIONS	01-30-23
-----------------	----------

ISSUE DATE:

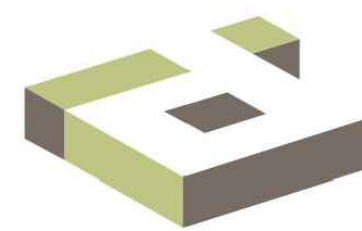
ISSUE FOR PERMIT	10-20-22
ISSUE FOR BID	01-30-23

DRAWN BY: AE/SS

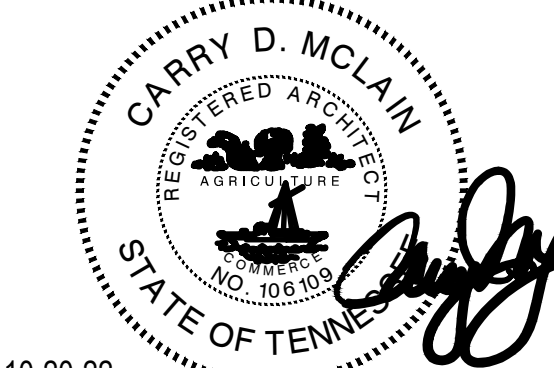
PANDA PROJECT #: D23503

PANDA STORE #: -

ARCH PROJECT #: 261-443



idGROUP



10-20-22

PANDA EXPRESS

PANDA HOME 2600
NORTH RIVERSIDE DR & 2ND ST.
CLARKSVILLE, TN 37040

A-401

ARCHITECTURAL
DETAILS

PANDA HOME 2600 R4

ISSUE FOR BID 01-30-2023

ISSUE FOR BID 01-30-2023