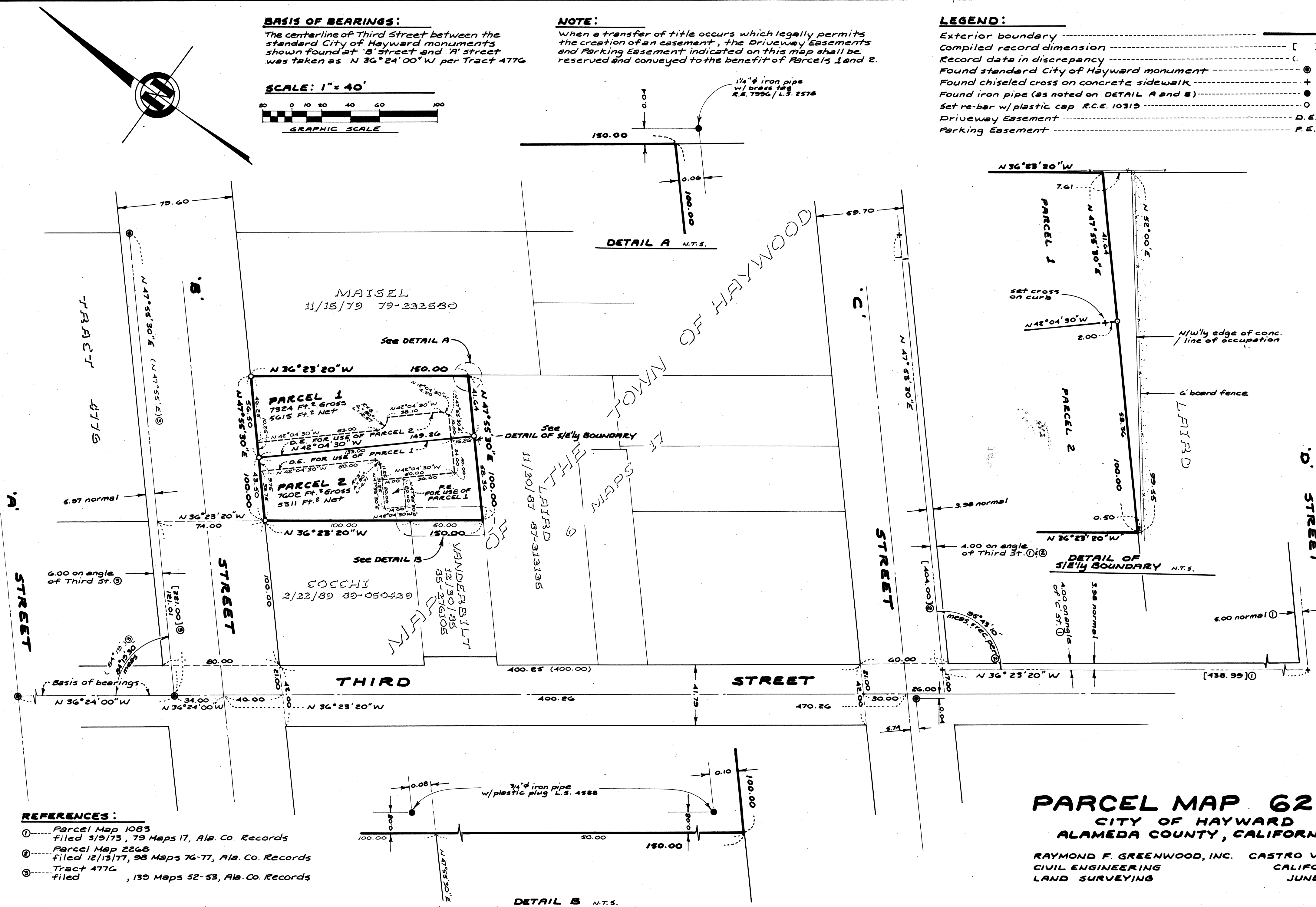


The centerline of Third Street between the standard City of Hayward monuments shown found at 'B' street and 'A' street was taken as N 36° 24' 00" W per Tract 4776

A horizontal graphic scale bar with alternating black and white segments. Above the bar, numerical markings are placed at intervals of 10, starting from 20 on the left and ending at 100 on the right. The bar itself is divided into segments of varying lengths corresponding to these intervals. Below the bar, the text "GRAPHIC SCALE" is printed in a bold, sans-serif font.

*When a transfer of title occurs which legally permits the creation of an easement, the Driveway Easements and Parking Easement indicated on this map shall be reserved and conveyed to the benefit of Parcels 1 and 2.*

Exterior boundary -----	
Compiled record dimension -----	[
Record data in discrepancy -----	(
Found standard City of Hayward monument -----	●
Found chiseled cross on concrete sidewalk -----	+
Found iron pipe (as noted on DETAIL A and B) -----	●
Set re-bar w/ plastic cap R.C.E. 10319 -----	○
Driveway Easement -----	D.E.
Parking Easement -----	P.E.



**ALAMEDA COUNTY, CALIFORNIA**

RAYMOND F. GREENWOOD, INC. CASTRO VALLEY  
CIVIL ENGINEERING CALIFORNIA  
LAND SURVEYING JUNE 1993

PM 6260

Map Bk 208 79 73