

DIRECTOR OF PLANNING AND COMMUNITY DEVELOPMENT'S CERT.

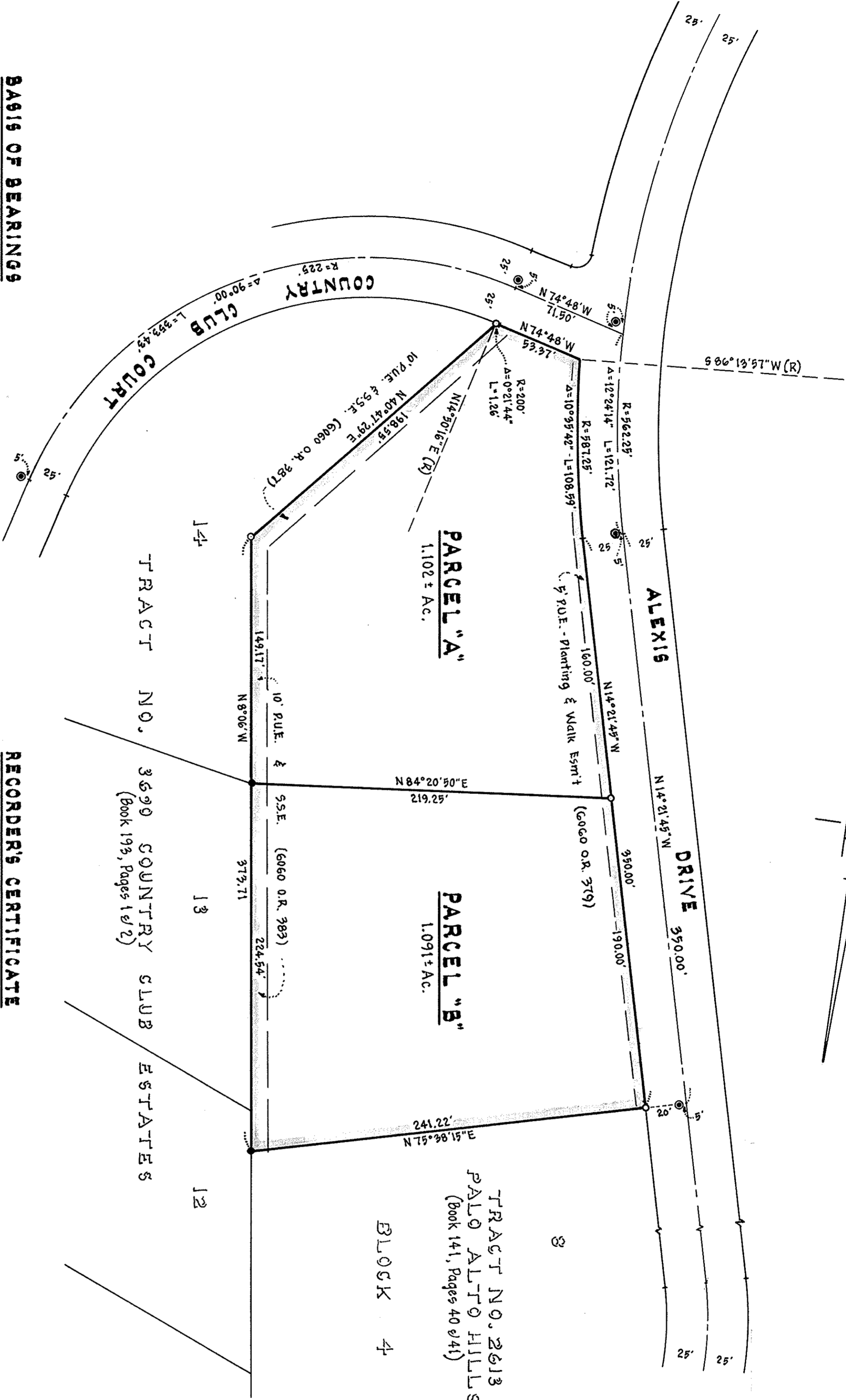
This map has been examined this 13<sup>th</sup> day of May, 1969 for conformance with the approved preliminary map.

*John G. R. Clegg*  
Director of Planning & Community Development

- LEGEND**
- Indicates standard City Monument Found.
  - " " Iron Pipe " "
  - " " " " Set.

**NOTES**

All distances and dimensions shown on this map are in feet and decimals thereof.  
The blue border indicates the boundary of the lands subdivided by this map.



**BASIS OF BEARINGS**

The bearing N14°21'45"W of the centerline of Alexis Drive as shown on that certain map entitled "Tract No. 2613, Palo Alto Hills" and recorded Dec. 28, 1961 in Book 141 of Maps at Pages 40 & 41, Records of Santa Clara County, California, was taken as the basis of bearings shown upon this map.

**SURVEYOR'S CERTIFICATE**

This map was prepared by me or under my direction and is based upon a field survey in conformance with the requirements of the Subdivision Map Act at the request of Country Club Associates in February, 1969. I hereby certify that it conforms to the approved tentative map and the conditions of approval thereof, that all provisions of applicable state law and local ordinances have been complied with.

*John G. R. Clegg*  
John G. R. Clegg, R.E.C. No. 9077

**RECORDER'S CERTIFICATE**

File No. 3618742, Fee \$5.00, this 13<sup>th</sup> day of May, 1969 at 3:42 P.M., in Book 233 of Parcel Maps at Page 26, at the request of John G. R. Clegg.

George E. Fowles, County Recorder  
By Deputy: *George E. Fowles*

**CITY ENGINEER'S CERTIFICATE**

This map has been examined this 13<sup>th</sup> day of May, 1969 for conformance with the requirements of Section 11575 of the Subdivision Map Act.

*H. M. Witbeck*  
H. M. Witbeck, City Engineer

**PARCEL MAP**

BEING A RESUBDIVISION OF LANDS LYING WESTERLY OF LOTS 12, 13 & 14 AS SHOWN ON THE MAP ENTITLED "TRACT NO. 3890 COUNTRY CLUB ESTATES" WHICH MAP IS FILED IN BOOK 193 OF MAPS AT PAGES 1 & 2, RECORDS OF SANTA CLARA COUNTY, CALIFORNIA.

CITY OF PALO ALTO  
SANTA CLARA COUNTY, CALIFORNIA

SCALE: 1" = 50'  
MARCH, 1969  
RANDETT, CLEGG & FOULK  
CIVIL ENGINEERS - LAND SURVEYORS  
PALO ALTO  
REDWOOD CITY