

CURVE DATA CHART				
CURVE	DELTA	RADIUS	TANGENT	ARC
A	16°57'04"	65.00'	9.68'	19.23'
B	35°54'57"	65.00'	21.07'	40.74'
C	31°04'33"	65.00'	18.07'	35.25'
D	83°56'39"	65.00'	58.47'	95.23'

LEGEND

FOUND

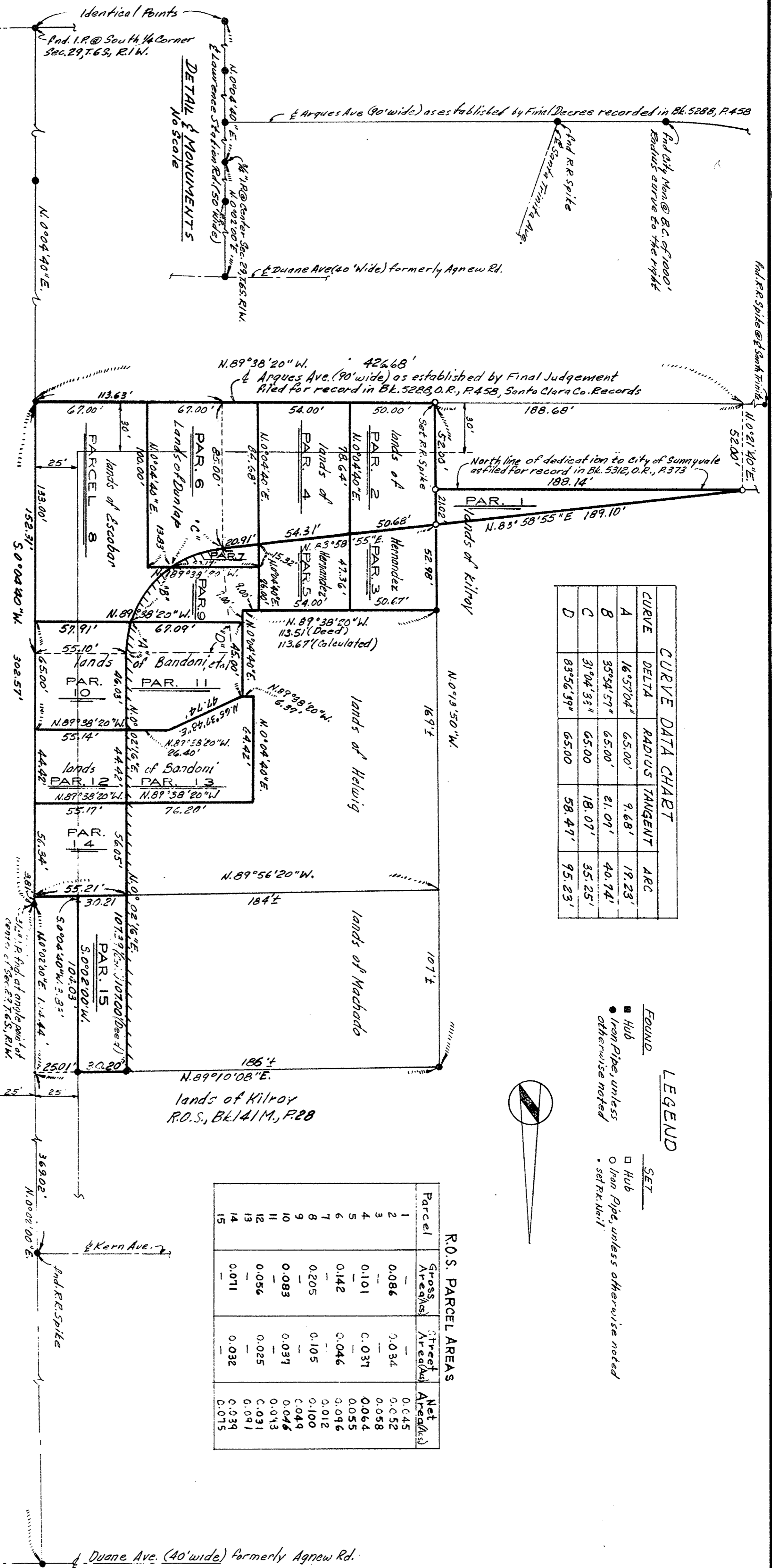
- Hub
- Iron Pipe, unless otherwise noted

SET

- Hub
- Iron Pipe, unless otherwise noted
- set R.R. Nail



R.O.S. PARCEL AREAS			
Parcel	Gross Area (Acres)	Street Area (Acres)	Net Area (Acres)
1	0.086	0.034	0.045
2	0.052	0.037	0.058
3	0.101	0.037	0.064
4	0.142	0.046	0.055
5	0.205	0.105	0.096
6	0.083	0.037	0.049
7	0.083	0.037	0.046
8	0.056	0.025	0.031
9	0.071	0.032	0.039
10	0.071	0.032	0.039
11	0.071	0.032	0.039
12	0.071	0.032	0.039
13	0.071	0.032	0.039
14	0.071	0.032	0.039
15	0.071	0.032	0.039



RECORD OF SURVEY

A portion of the lands of MACHADO, HELWIG, KILROY, et al and being a portion of Sec. 29, T. 6 S., R. 1 W., M.D.B. & M.

City of Sunnyvale

SANTA CLARA COUNTY, CALIFORNIA
SCALE: 1" = 40 FT.

NON-SUBDIVISION CERTIFICATE

This is to certify that this record of survey does not constitute a subdivision of land as defined under Section 11535 of the Business and Professions Code of the State of California, nor under Section 12,121 of the Ordinance Code of the County of Santa Clara for the reason that any division of land shown herein is not for the purpose of sale or lease by the County of Santa Clara whether immediate or future. Any division of land shown herein is for the express purpose of describing rights of way for the acquisition and construction of county highways.

By Deputy James I. Patt
County Surveyor, County of Santa Clara

SURVEYOR'S CERTIFICATE

This map correctly represents a survey made by me or under my direction in conformance with the requirements of Chapter 15 of the Business and Professions Code of the Board of Supervisors of the County of Santa Clara.

By Deputy James I. Patt
County Surveyor, County of Santa Clara

RECORDER'S CERTIFICATE

File No. 2169162
Filed for record this 4th day of April, 1962, at 9:18 a.m. in Book 145 of Maps, at Page 9 of the request of The Board of Supervisors of the County of Santa Clara.

By Deputy Paul R. Teilih
County Recorder

By Deputy James I. Patt
County Surveyor, County of Santa Clara