

CORNER RECORD

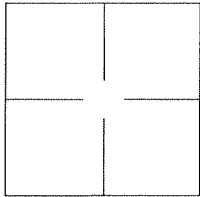
Agency Index BK 138 PG 75

Document Number CR 14540

City of UNINCORPORATED AREA

County of ALAMEDA, California

Brief Legal Description ALAMEDA COUNTY MONUMENT HG57K4



CORNER TYPE

Government Corner ☐ Control ☐
Meander ☐ Property ☐
Rancho ☐ Other ☒

Date of Survey 2020-07-20

COORDINATES (Optional)

N. E.

Elevation

Units Metric ☐ U.S. Survey Foot ☒

Horizontal Datum

Zone Epoch Date

Vertical Datum:

☐ Complies with Public Resources Code §§8801-8819

☐ Complies with Public Resources Code §§8890-8902

PLS Act Ref.: ☐ 8765(d) ☒ 8771 ☐ 8773

Other:

Corner/
Monument: ☒ Left as found ☐ Established ☐ Rebuilt ☒ Pre-Construction
☐ Found and tagged ☐ Reestablished ☒ Referenced ☐ Post-Construction

Narrative of corner identified and monument as found and set or reset:

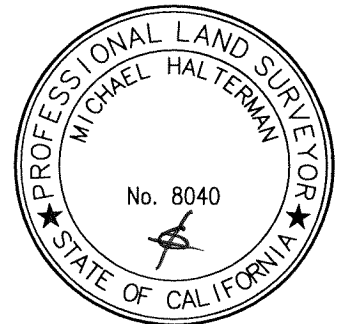
☒ See sheet #2 for description(s):

ALAMEDA COUNTY MONUMENT HG57K4

SURVEYOR'S STATEMENT

This Corner Record was prepared by me or under my direction in conformance with
the Professional Land Surveyor's Act on 16 June, 2021.

Signed [Signature] P.L.S. or R.C.E. No.: 8040

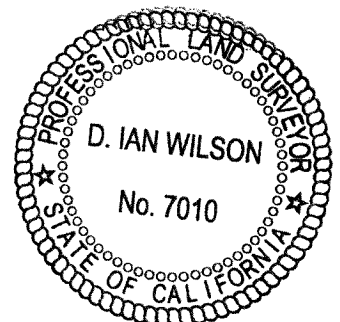


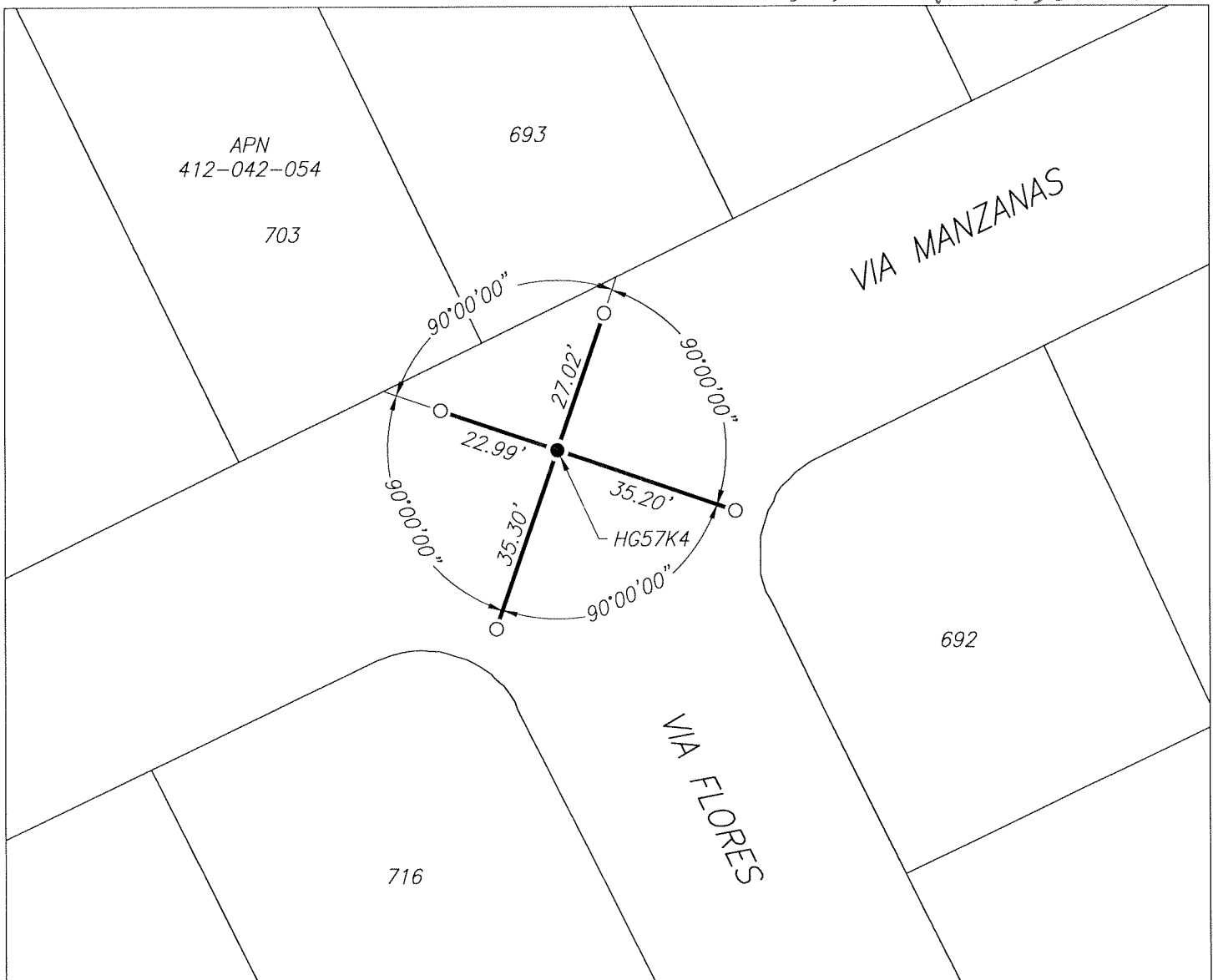
COUNTY SURVEYOR'S STATEMENT

This Corner Record was received JUL 01 2021, and examined
and filed .

Signed D. Ian Wilson P.L.S. or R.C.E. No.: 7010
Title ALAMEDA COUNTY SURVEYOR

County Surveyor's Comment





LEGEND

● FOUND 3" BRASS DISK IN CONCRETE, IN MONUMENT WELL, WITH 5/8" PIN STAMPED "ALAMEDA COUNTY SURVEYOR MAZ FLOR 2003", PER (A)

○ SET CUT CROSS IN CONCRETE

692 REFERENCE STREET ADDRESS

APN ASSESSORS PARCEL NUMBER

AA##A# ALAMEDA COUNTY MONUMENT ID

SCALE

1" = 30'

REFERENCES

(A) CORNER RECORD 2100 FILED FOR RECORD ON MARCH 31, 2004, IN BOOK 18 OF CORNER RECORDS, AT PAGE 80, ALAMEDA COUNTY RECORDS