

GENERAL NOTES

- ALL NEW PAINT WORK MUST INCLUDE A 2 YEAR FULL WARRANTY AND A YEAR PRO-RATED LABOR AND MATERIALS WARRANTY.
- ALL PAINT COLOR SELECTIONS TO BE VERIFIED WITH OWNERS CONSTRUCTION MANAGER BEFORE ORDERING.
- TOP OF PARAPET TO BE CLAD WITH UNA-CLAD COPING. FINAL SELECTION TO BE VERIFIED WITH OWNER'S CONSTRUCTION MANAGER.
- ALL PREFABRICATED CANOPY SYSTEMS TO BE FIELD VERIFIED BEFORE FABRICATION.
- ALL WALL MOUNTED EQUIPMENT SUCH AS ELECTRICAL METERS, IRRIGATION METERS, PHONE/CABLE BOXES, ETHERNET VENTS AND LOUVERS, ETC., SHALL BE PAINTED TO MATCH THE WALL ON WHICH IT IS MOUNTED OR OTHERWISE CONSISTENT WITH THE COLOR(S) OF THE BUILDING.

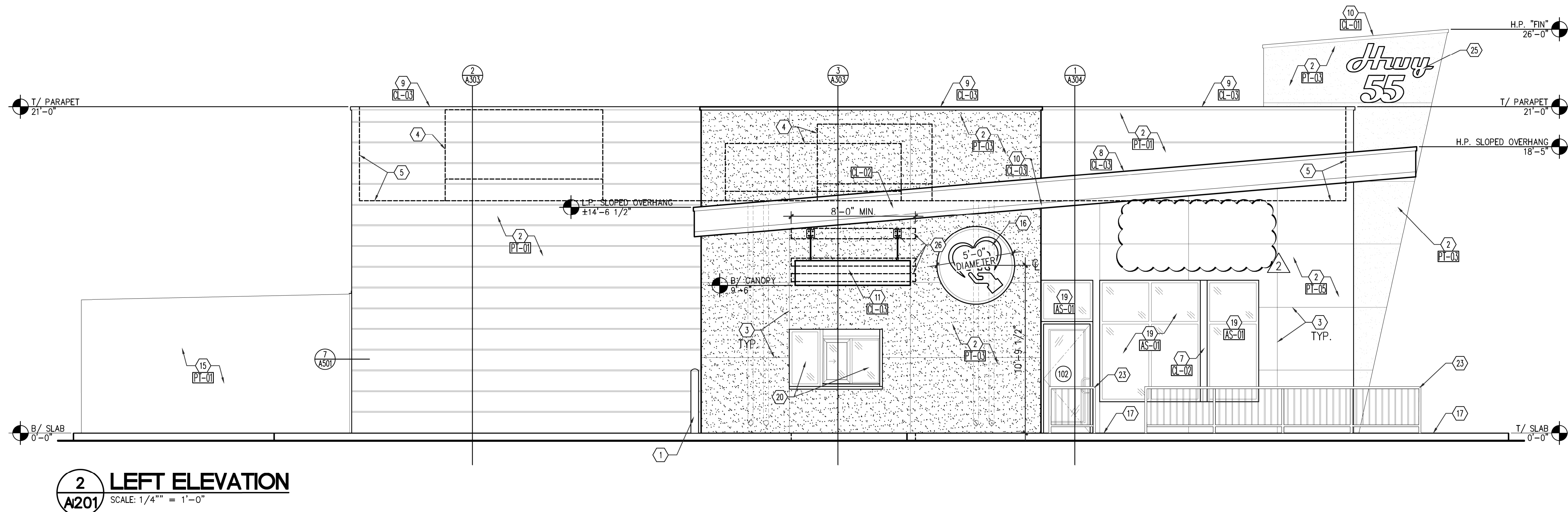
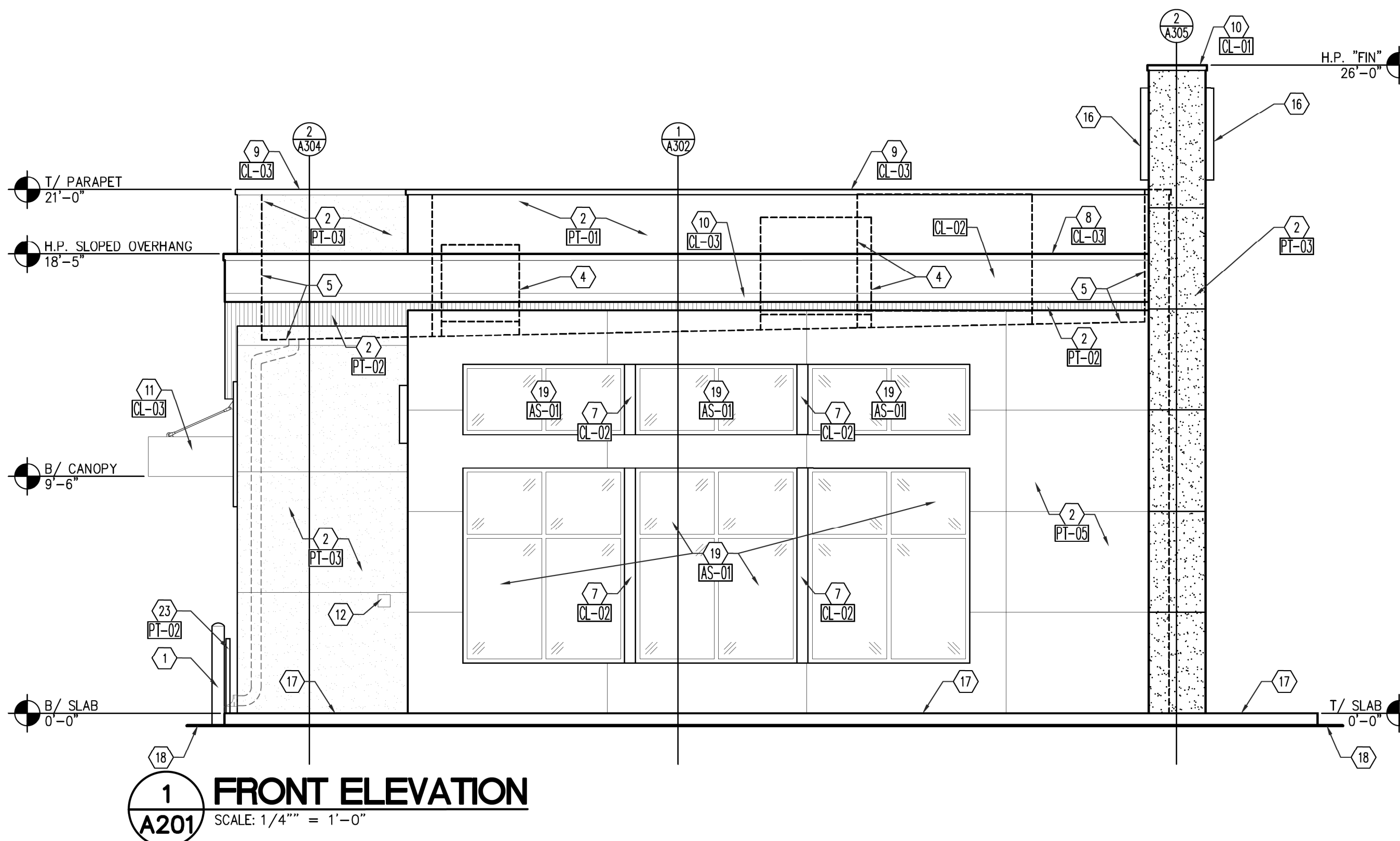
CONSTRUCTION NOTES

- PIPE BOLLARD - SEE SITE PLAN.
- E.I.F.S. MEDIUM SAND FINISH - SEE WALL SECTIONS.
- E.I.F.S. CONTROL JOINT.
- OUTLINE OF MECHANICAL EQUIPMENT BEYOND.
- APPROXIMATE LINE OF ROOF SURFACE BEYOND.
- SLOPED ROOF SURFACE.
- CLEAR ANODIZED ALUMINUM BREAK METAL BETWEEN STOREFRONT WINDOWS.
- CONTINUOUS METAL ROOF EDGE OR DRIP FLASHING - SEE WALL SECTIONS.
- CONTINUOUS METAL EDGE FLASHING.
- CONTINUOUS METAL DRIPS FLASHING - SEE DETAIL 2/AS01.
- PRE-FABRICATED HANGER ROD CANOPY SYSTEM. GENERAL CONTRACTOR PROVIDED AND INSTALLED - SEE WALL SECTIONS.
- KNOX BOX MOUNTED AT 4'-6" A.F.F.
- ELECTRICAL METER SERVICE - SEE ELECTRICAL DRAWINGS.
- GAS METER/SERVICE - SEE PLUMBING DRAWINGS.
- PREMANUFACTURED AND PRIMED COOLER/FREEZER/STORAGE - BY MANUFACTURER. PAINT TO MATCH E.I.F.S.
- SIGNAGE FEATURE BY OWNER'S VENDOR. GENERAL CONTRACTOR TO COORDINATE INSTALLATION WITH STRUCTURE AND ELECTRICAL. COLOR: RED.
- CONCRETE SIDEWALK/CURB - SEE SITE PLAN.
- APPROXIMATE GRADE/PAVEMENT.
- STOREFRONT DOOR/WINDOW SYSTEM - SEE FLOOR PLAN FOR MORE INFORMATION.
- DRIVE-THRU WINDOW SYSTEM - SEE FLOOR PLAN FOR MORE INFORMATION.
- HOLLOW METAL DOOR AND FRAME - SEE DOOR SCHEDULE.
- GREASE COLLECTION UNIT - SEE EQUIPMENT PLAN.
- PEDESTRIAN GUARD RAIL - SEE CIVIL DRAWINGS.
- INSULATED METAL DOOR AND HOLLOW METAL FRAME PAINT TO MATCH E.I.F.S. - SEE DOOR SCHEDULE.
- SIGNAGE FEATURE BY OWNER'S VENDOR. GENERAL CONTRACTOR TO COORDINATE INSTALLATION WITH STRUCTURE AND ELECTRICAL. COLOR: WHITE.
- BLOCKING FOR PRE-FABRICATED HANGER ROD CANOPY SYSTEM BY GENERAL CONTRACTOR - COORDINATE WITH SIGN VENDOR & SEE WALL SECTIONS.

EXTERIOR FINISH SCHEDULE

- CL-01** PREFINISHED ALUMINUM EDGE FLASHING - COLOR - RED - SW6866 HEARTHROB
- CL-02** METAL FASCIA/ BRAKE METAL WRAP - MILL FINISH - CLEAR COAT
- CL-03** PREFINISHED ALUMINUM EDGE OR DRIP FLASHING - COLOR - BLACK - SW6993 BLACK OF NIGHT
- PE-01** E.I.F.S. - PAREX - STYLE: MEDIUM SAND FINISH - COLOR - GRAY - SW 6002 ESSENTIAL GRAY
- PE-02** E.I.F.S. - PAREX - STYLE: MEDIUM SAND FINISH - COLOR - BLACK - SW6993 BLACK OF NIGHT
- PE-03** E.I.F.S. - PAREX - STYLE: MEDIUM SAND FINISH - COLOR - RED - PMS 20-0069 TPM CANDY APPLE RED
- PE-04** E.I.F.S. - PAREX - STYLE: MEDIUM SAND FINISH - COLOR - WHITE - SW7005 PURE WHITE
- AS-01** ALUMINUM STOREFRONT MILL FINISHED - COLOR: CLEAR COAT

* REFER TO THE MOST CURRENT HWY 55 BRAND BOOK FOR ALL INTERIOR AND EXTERIOR COLORS - VERIFY ALL FINISHES WITH OWNER PRIOR TO PURCHASING



PROJECT: **HIGHWAY 55**
30 PROTOTYPE
1424 CURTIS BRIDGE ROAD
WILKESBORO, NC 28697
DRAWING: EXTERIOR ELEVATIONS

Revisions

THRU ADDENDUM "A"
01/20/2022

EQUIP. UPDATE - 06.24.2022

PROJECT DATE
01/07/2022

Drawn By
CDK

Checked By
GRL

Sheet No.

A201