

# CORNER RECORD

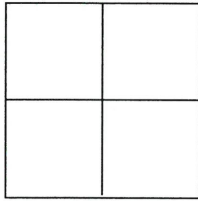
Agency Index

BK

116

PG

30

Document Number CR 12044City of BERKELEY County of ALAMEDA, CaliforniaBrief Legal Description CITY OF BERKELEY MONUMENT B1675, LOCATED OPP. 1029 SIERRA STREET.**CORNER TYPE****COORDINATES (Optional)**

Government Corner ☐ Control ☒  
Meander ☐ Property ☐  
Rancho ☐ Other ☐

Date of Survey 7/6/18

N. \_\_\_\_\_ E. \_\_\_\_\_

Elevation \_\_\_\_\_

Units Metric ☐ U.S. Survey Foot ☐

Horizontal Datum \_\_\_\_\_

Zone \_\_\_\_\_ Epoch Date \_\_\_\_\_

Vertical Datum \_\_\_\_\_

☐ Complies with Public Resources Code §§8801-8819☐ Complies with Public Resources Code §§8801-8902

PLS Act Ref.:

☐ 8765(d)☒ 8771☐ 8773☐ Other:Corner/  
Monument:☐ Left as found☐ Established☐ Rebuilt☐ Pre-Construction☐ Found and tagged☒ Reestablished☐ Referenced☒ Post-Construction

Narrative of corner identified and monument as found, set, reset, replaced, or removed.

☒ See sheet #2 for description(s)

SEE CR10949 FOR PRE-CONSTRUCTION.

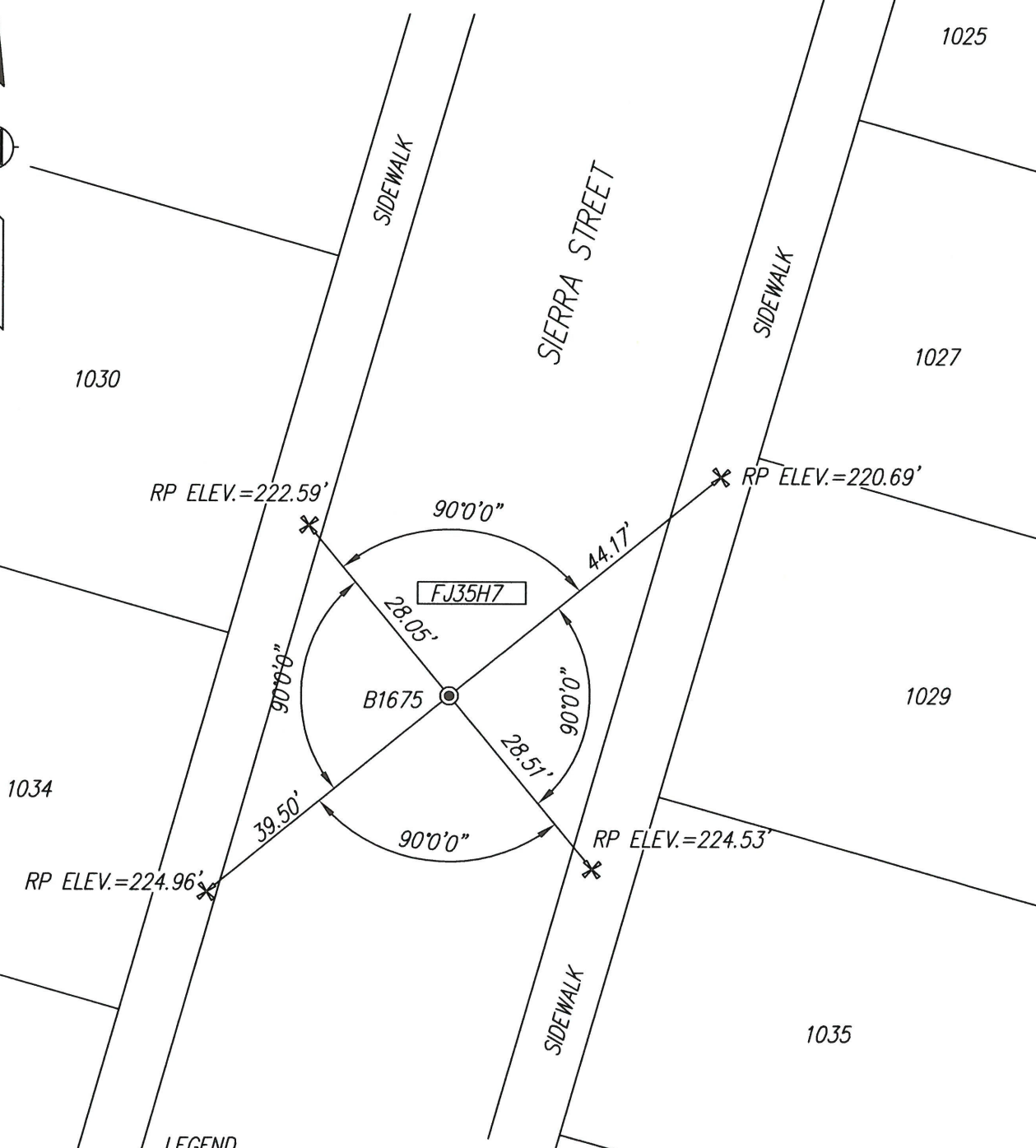
**SURVEYOR'S STATEMENT**

This Corner Record was prepared by me or under my direction in conformance with

the Professional Land Surveyor's Act on JULY 9, 2018Signed Patrick M. Reilly P.L.S. or R.C.E. No. 8178**COUNTY SURVEYOR'S STATEMENT**This Corner Record was received 10 AUGUST 2018and examined and filed 7 DECEMBER 2018Signed Michael Rubner P.L.S. or R.C.E. No. 6843Title COUNTY SURVEYOR**County Surveyor's Comment**

KSR JOB# 19653-18-04

NOTE: ELEVATIONS ESTABLISHED BY DIFFERENTIAL LEVELING  
UTILIZING A SOKKIA SDL30 DIGITAL LEVEL.



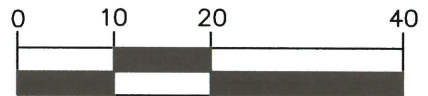
LEGEND

⊙ = RE-SET CITY MONUMENT B1675;  
2" BRASS DISC IN STANDARD WELL  
ELEVATION = 223.33' COB DATUM

✕ = FOUND CUT CROSS REFERENCE POINT (RP),  
IN CONCRETE SIDEWALK PER CR 10949

AA ## A# = ALAMEDA COUNTY MONUMENT I.D.

GRAPHIC SCALE



( IN FEET )

1 inch = 20 ft.