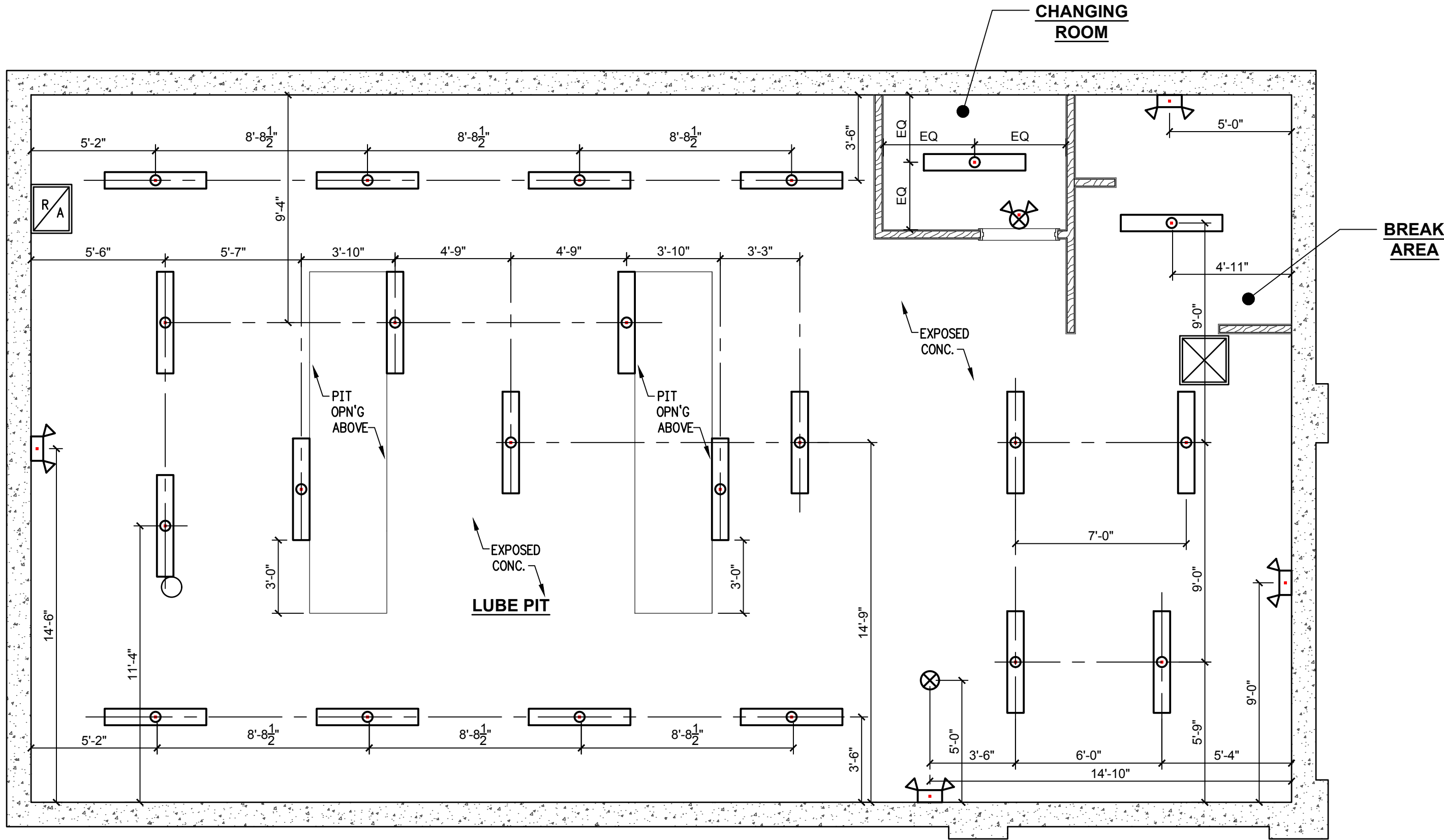
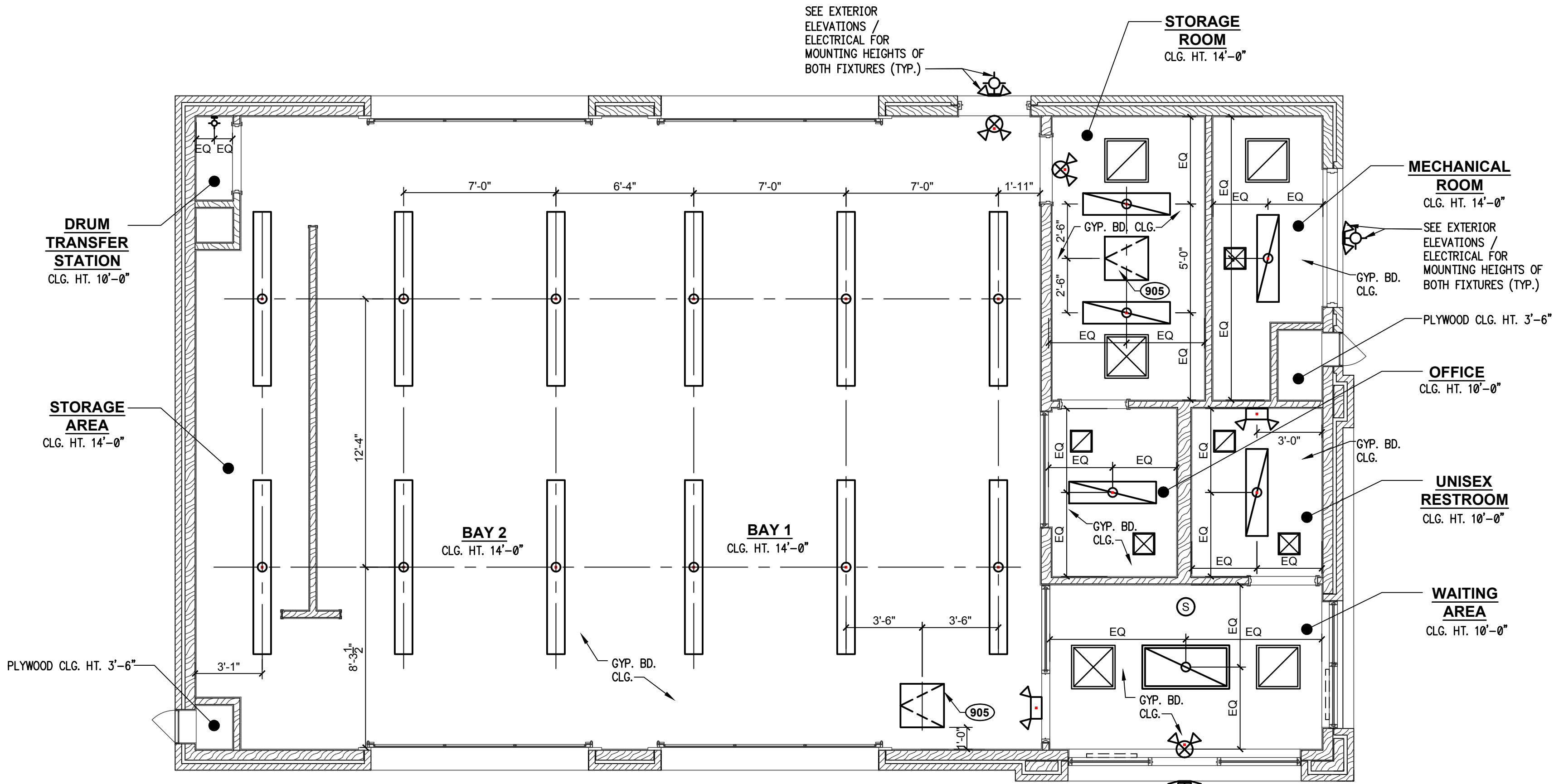


W:\PROJECTS\VALVOLINE\754078-JOHNSON CITY, TN (TN1703)\02-BLDG\PLANDWG\078\_A8\_10/18/2017 3:24:05 PM, DULEY



REFLECTED CEILING  
PLAN @ LOWER LEVEL

SCALE: 1/4" = 1'-0".



REFLECTED CEILING  
PLAN @ UPPER LEVEL

SCALE: 1/4"=1'-0".

LEGEND

- 2x4 RECESSED LED
- SURFACE MOUNTED 1x4 LED
- LED STRIP FIXTURE
- DIFFUSER - SEE MECHANICAL PLAN FOR SIZE
- RETURN AIR GRILLE - SEE MECHANICAL PLAN FOR SIZE
- EXHAUST - SEE MECHANICAL PLAN FOR SIZE
- CEILING MOUNTED LED
- LED WALL PACK LIGHT
- EXIT SIGN
- EXIT SIGN W/ DUAL EMERGENCY LIGHT
- DUAL HEAD EMERGENCY LIGHT W/ BATTERY
- SMOKE DETECTOR
- PVC CHASE THRU SLAB ABOVE

NOTES

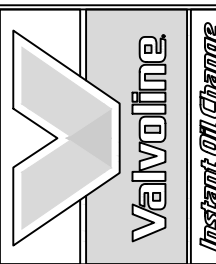
- REFER TO SECURITY PLAN FOR CAMERA, MOTION DETECTOR AND DOOR CONTACT LOCATIONS
- REFER TO ELECTRICAL & MECHANICAL DRAWINGS FOR SPECIFIC INFORMATION.



CESO  
WWW.CESOINC.COM

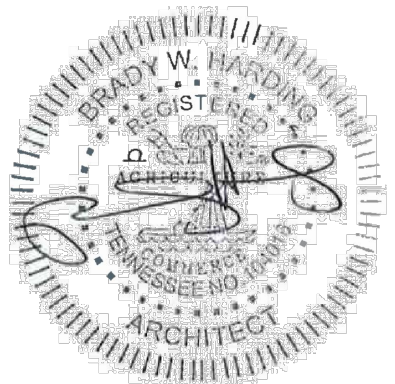
8534 YANKIEE ST., SUITE 2B, DAYTON, OH 45459  
PHONE: (937) 435-8584 FAX: (937) 435-3307

No.	Date	Revisions/Submissions
1	10.24.17	ISSUED FOR BID/PERMIT
2	08.24.17	ISSUED FOR LLOWNER REVIEW



VALVOLINE INSTANT OIL CHANGE  
1413 SUNSET DRIVE  
JOHNSON CITY, TN. 37604

© 2017 CESO, INC



Project No.	753737.01
Scale	AS NOTED
Drawn	CESO
Checked	BWH
Date	10.24.17
Drawing Title	

REFLECTED  
CEILING PLANS

Drawing No.

A-8