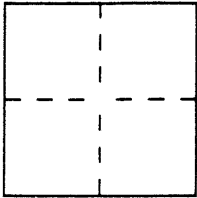


CORNER RECORD

Document Number 2535City of BERKELEY County of ALAMEDA, CaliforniaBrief Legal Description SOUTHERLY LINE OF LOT 12 OF BLOCK W OF THE AMENDED MAP OF REGENTS PARK 18 M 38 ALA. CTY. REC.

CORNER TYPE

Government Corner ☐ Control ☐
 Meander ☐ Property ☒
 Rancho ☐ Other ☐
 Date of Survey 8/16/95

COORDINATES
(Optional)

N. _____
 E. _____
 Zone _____ Datum _____
 Elev. _____

Corner — Left as found ☐ Found and tagged ☐ Established ☒ Reestablished ☐ Rebuilt ☐

Identification and type of corner found: Evidence used to identify or procedure used to establish or reestablish the corner: SET 3/4" IRON PIPE AND NAIL AND TAG BASED ON CITY OF BERKELEY STANDARD IRON PIN MONUMENTS IN IRON CASTINGS ON GILMAN STREET AT KAINS AVE., AND AT STANNAGE AVE.

A description of the physical condition of the monument as found and as set or reset: SET 3/4" IRON PIPE AT S.E. CORNER OF LOT 12, AND SET NAIL & TAG IN SIDEWALK 5' WESTERLY OF S.W. COR. OF LOT 12 OF BLOCK W. OF 18 M 28

SURVEYOR'S STATEMENT

This Corner Record was prepared by me or under my direction in conformance with the Land Surveyors' Act on SEPTEMBER 13 19 95.

Signed Paul O. Webb L.S. or R.C.E. Number LS 5530

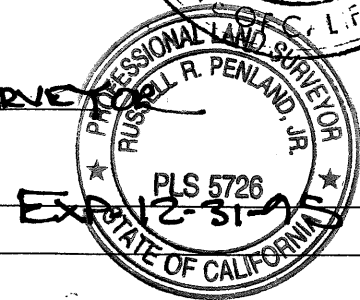
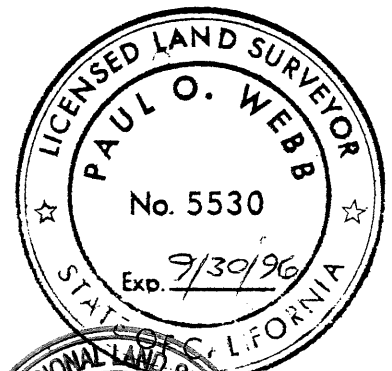
COUNTY SURVEYOR'S STATEMENT

This Corner Record was received _____ 19 ____ and examined

and filed DIO-17-D 19 95

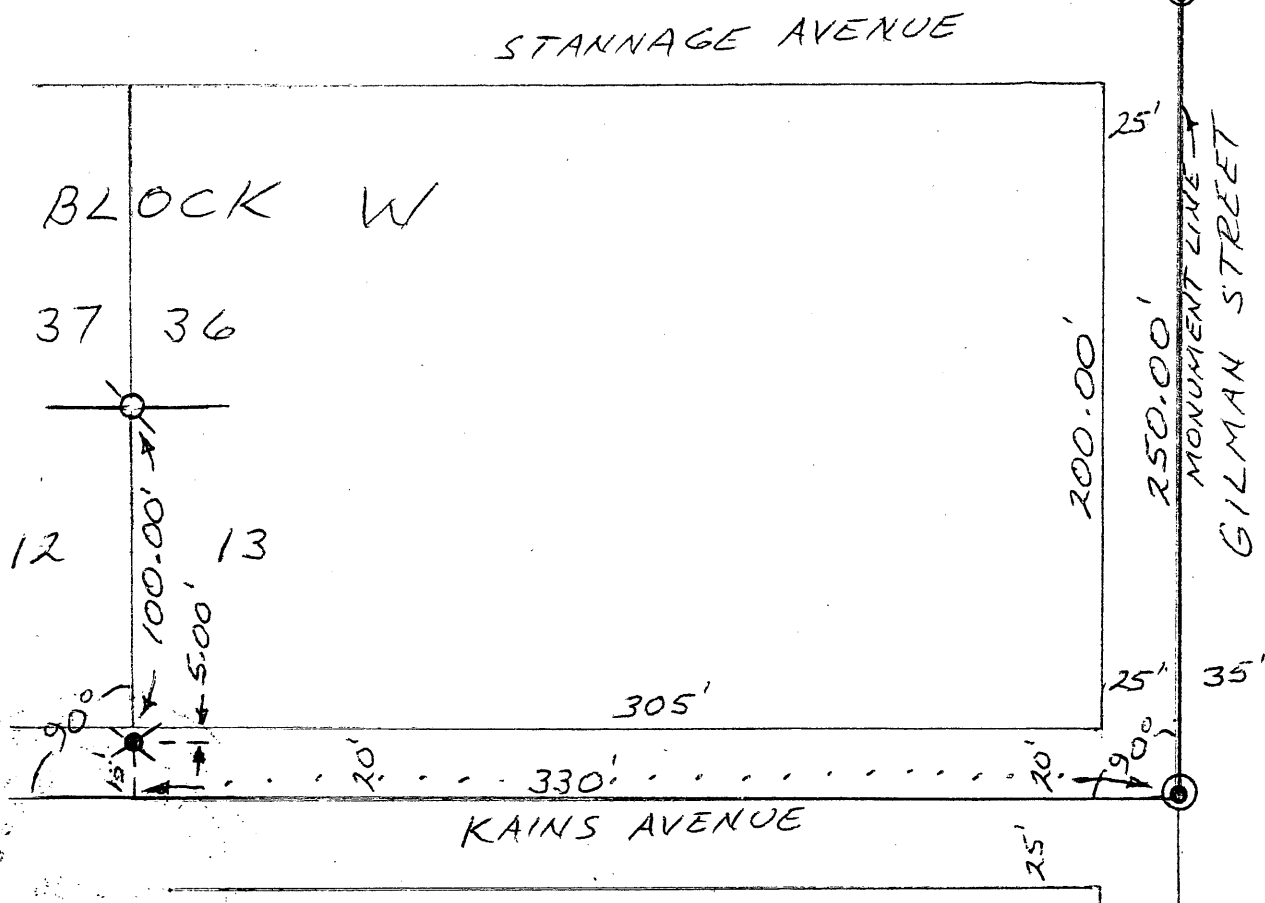
Signed Russell R. Penland, Jr. Title DEPUTY COUNTY SURVEYOR

County Surveyor's Comment _____



THE
SOUTHERLY LINE OF LOT 12, BLOCK W
OF THE AMENDED MAP OF REGENTS
PARK FILED DECEMBER 27, 1909
IN BOOK 18 OF MAPS, PAGE 38
ALAMEDA COUNTY RECORDS

SCALE: 1" = 60'



Legend:

- ⊙ - Found standard City of Berkeley Iron Pin Monument in cast iron box.
- ⊙ - Set 3/4" Iron Pipe Tagged L.S. 5530
- ⊙ - set nail and tag L.S. 5530 in sidewalk

DRN BY P.W.