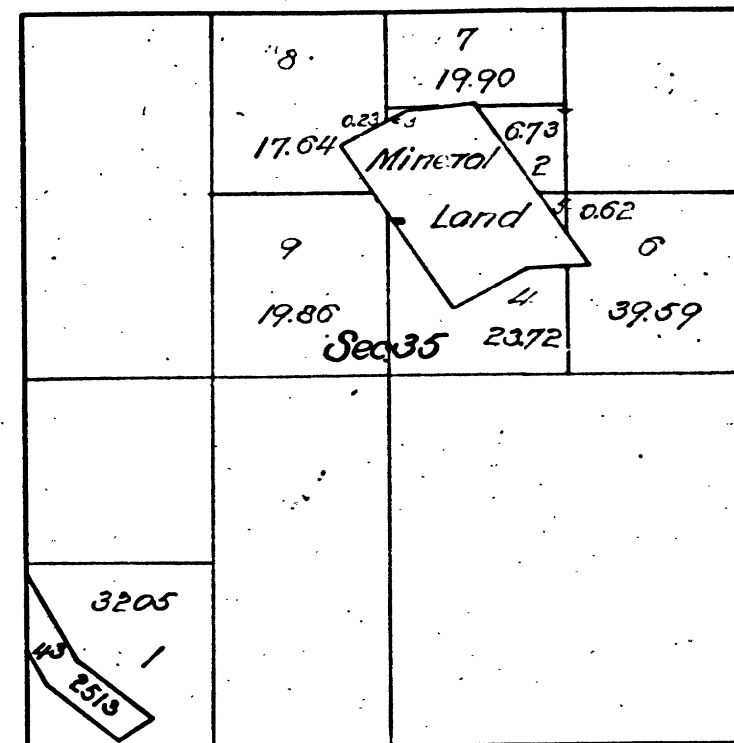


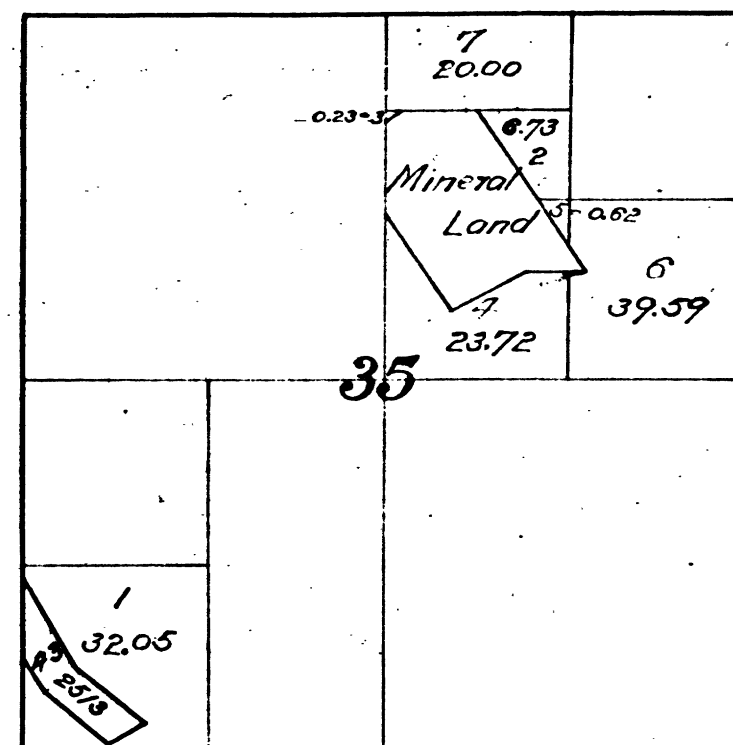
Township N° 7 North, Range N° 13 East, Mount Diablo Meridian.



43 2513 Old Henry Quartz Mine V75-20  
 Segregation of agricultural from mineral land Lots 2, 3, 4, and 6, Sec. 35.  
 see field notes of U.S. Dep. Min. Surv. F.F. Ames dated July 22<sup>nd</sup> and 23<sup>rd</sup> 1899

The above diagram of Section 35, Township No. 7 North, Range No. 13 East, Mount Diablo Meridian, California, is correctly constructed from official plats on file in this office.  
 U.S. Surveyor-General's Office  
 San Francisco, California.  
 April 25<sup>th</sup> 1901

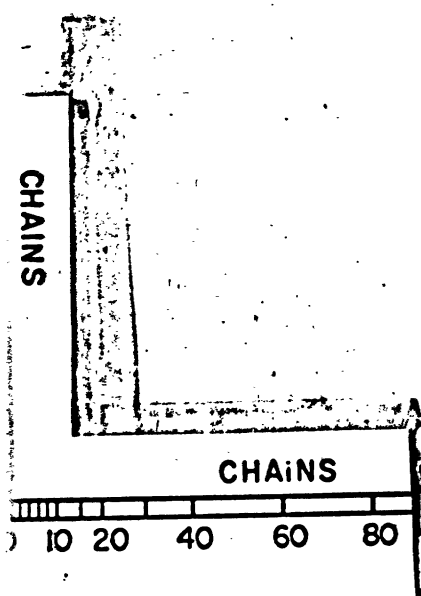
J. M. Gleaves  
 U.S. Surveyor-General for California



43 2513 Old Henry Quartz Mine V75-20  
 Segregation of agricultural from mineral land Lots 2, 3, 4, and 6, Section 35.  
 see field notes of U.S. Dep. Min. Surv. F.F. Ames dated July 22<sup>nd</sup> and 23<sup>rd</sup> 1899

The above diagram of Section 35, Township N° 7 North, Range N° 13 East, Mount Diablo Meridian, California, is correctly constructed from official plats on file in this office.  
 U.S. Surveyor-General's Office.  
 San Francisco, California.  
 August 17, 1901.

J. M. Gleaves  
 U.S. Surveyor-General for California



DEPARTMENT OF THE INTERIOR,  
 BUREAU OF LANDS,  
 Washington, D. C., July 5, 1908.  
 I hereby certify that this is a true copy  
 of the plat of official survey of the lands  
 to which it relates, on file in this office.

Wm. H. ...  
 Register, Bureau of Lands, D.C.