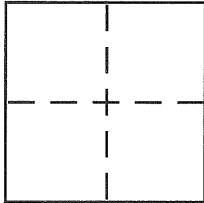


Bk 30 Pg 8

# CORNER RECORD

Document Number CR 3349  
City of BERKELEY County of ALAMEDA, California

Brief Legal Description MONUMENT B0245 (CITY OF BERKELEY)



## CORNER TYPE

Government Corner ☐ Control ☐  
Meander ☐ Property ☐  
Rancho ☐ Other ☒  
Date of Survey 4-11-08

## COORDINATES (Optional)

N. \_\_\_\_\_  
E. \_\_\_\_\_  
Zone \_\_\_\_\_ NAD27 ☐ NAD83 ☐  
NAD83 Epoch \_\_\_\_\_  
Elev. \_\_\_\_\_  
Vert. Datum: NGVD29 ☐ NAVD88 ☐  
Meas. Units: Metric ☐ Imperial ☐

Corner - Left as found ☒ Found and tagged ☐ Established ☐ Reestablished ☐ Rebuilt ☐

Identification and type of corner found: Evidence used to identify or procedure used to establish or reestablish the corner:

MONUMENT REFERENCE (SEE PAGE 2)

A description of the physical condition of the monument as found and as set or reset:

SEE PAGE 2

## SURVEYOR'S STATEMENT

This Corner Record was prepared by me or under my direction in conformance with the Land Surveyor's Act on APRIL 11, 2008

Signed [Signature] P.L.S or R.C.E. No. PLS 5003

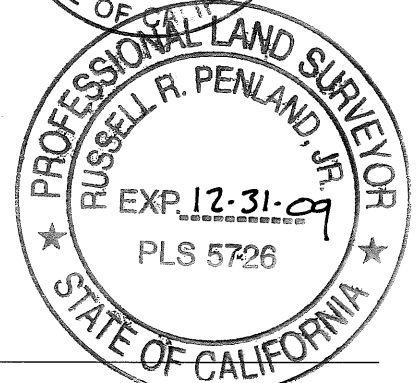
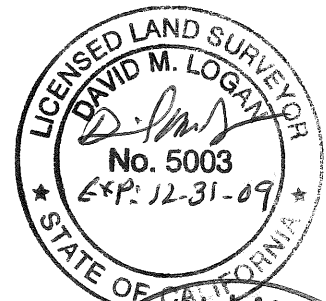
## COUNTY SURVEYOR'S STATEMENT

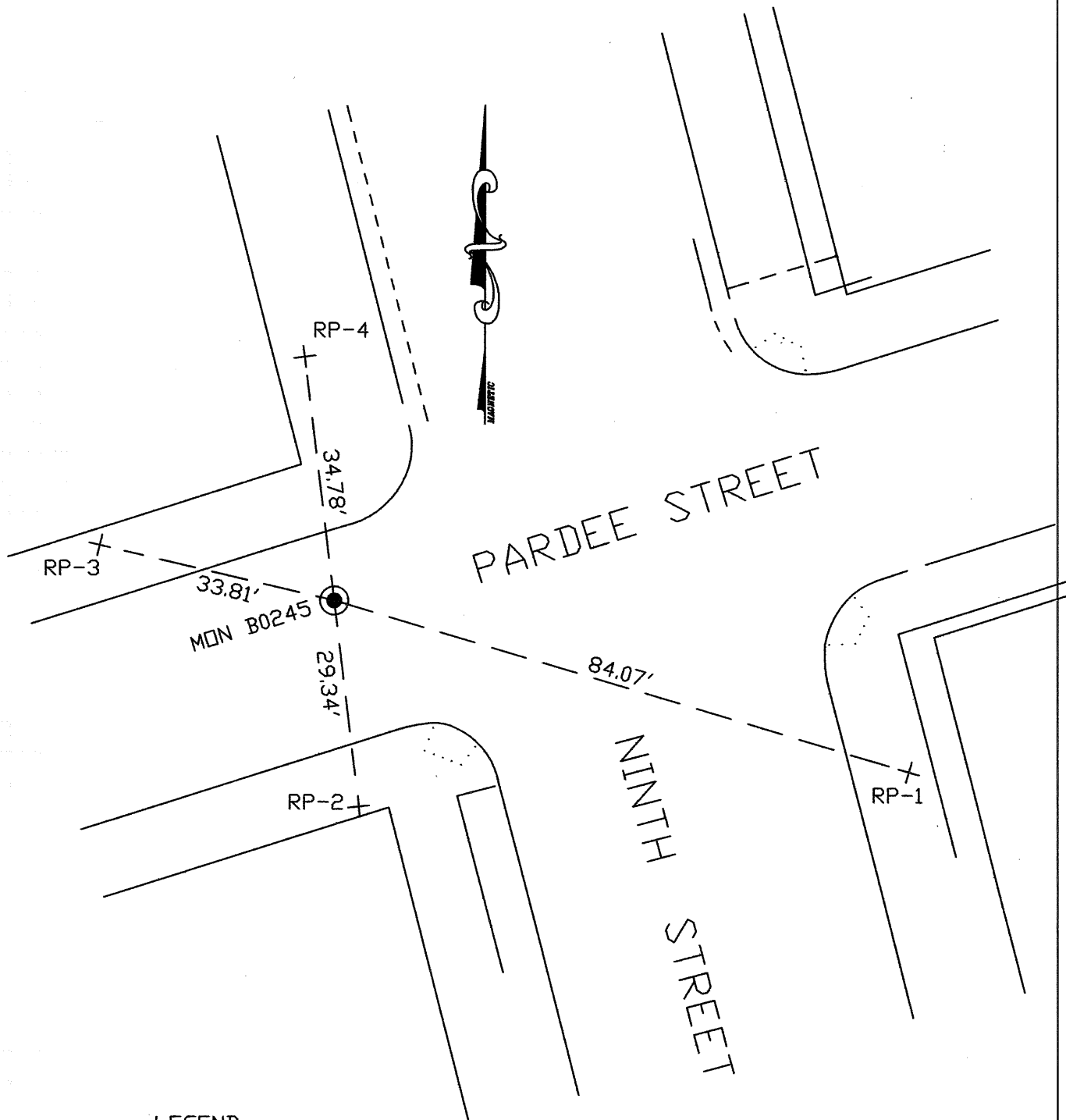
This Corner Record was received 5-2-08  
and examined and filed 5-27-08

Signed [Signature] P.L.S or R.C.E. No. 5726

Title COUNTY SURVEYOR

County Surveyor's Comment \_\_\_\_\_





#### LEGEND

- STANDARD WELL-TYPE CITY MONUMENT WITH  $\frac{1}{4}$ " PIN  
 SET REFERENCE CROSS IN SIDEWALK

#### NOTE:

THE EXISTING MONUMENT AS SHOWN IS REFERENCED BY STRAIGHT LINES BEYWEEN RP-1 TO RP-3 AND RP-2 TO RP-4.