

PARCEL MAP

CONSISTING OF ONE (1) SHEET

BEING A PORTION OF LOT 19 OF WARE TRACT, RECORDED IN BOOK "C" OF MAPS, PAGE 45.

IN THE CITY OF SAN JOSE CALIFORNIA
MARCH, 1970
SCALE: 1"=100'

RUTH AND GOING
CIVIL ENGINEERS
SAN JOSE, CALIFORNIA

ENGINEER'S CERTIFICATE

This map was prepared by me or under my direction and was compiled from record data in conformance with the requirements of the Subdivision Map Act at the request of Borenth Trust fund in March, 1970. I hereby certify that it conforms to the approved tentative map and the conditions of approval thereof; that all provisions of applicable State laws and local ordinances have been complied with.

Date: May 14th 1970
Leo H. Burtel
Registered Civil Engineer Certificate No. 7147

CITY ENGINEER'S CERTIFICATE

This map has been examined this 17th day of August, 1970, for conformance with the requirements of Section 11575 of the Subdivision Map Act.

A.R. Turturici - City Engineer
By John W. Hamrick
Deputy

RECORDER'S CERTIFICATE

Filed this 19 day of August, 1970 at 12:54 PM in Book 271 of Maps at page 51 at the request of Ruth and Going.

File No. 3858902
Fee paid \$ 5.20
George F. Fowler - County Recorder
By George F. Fowler
Deputy

BASIS OF BEARINGS

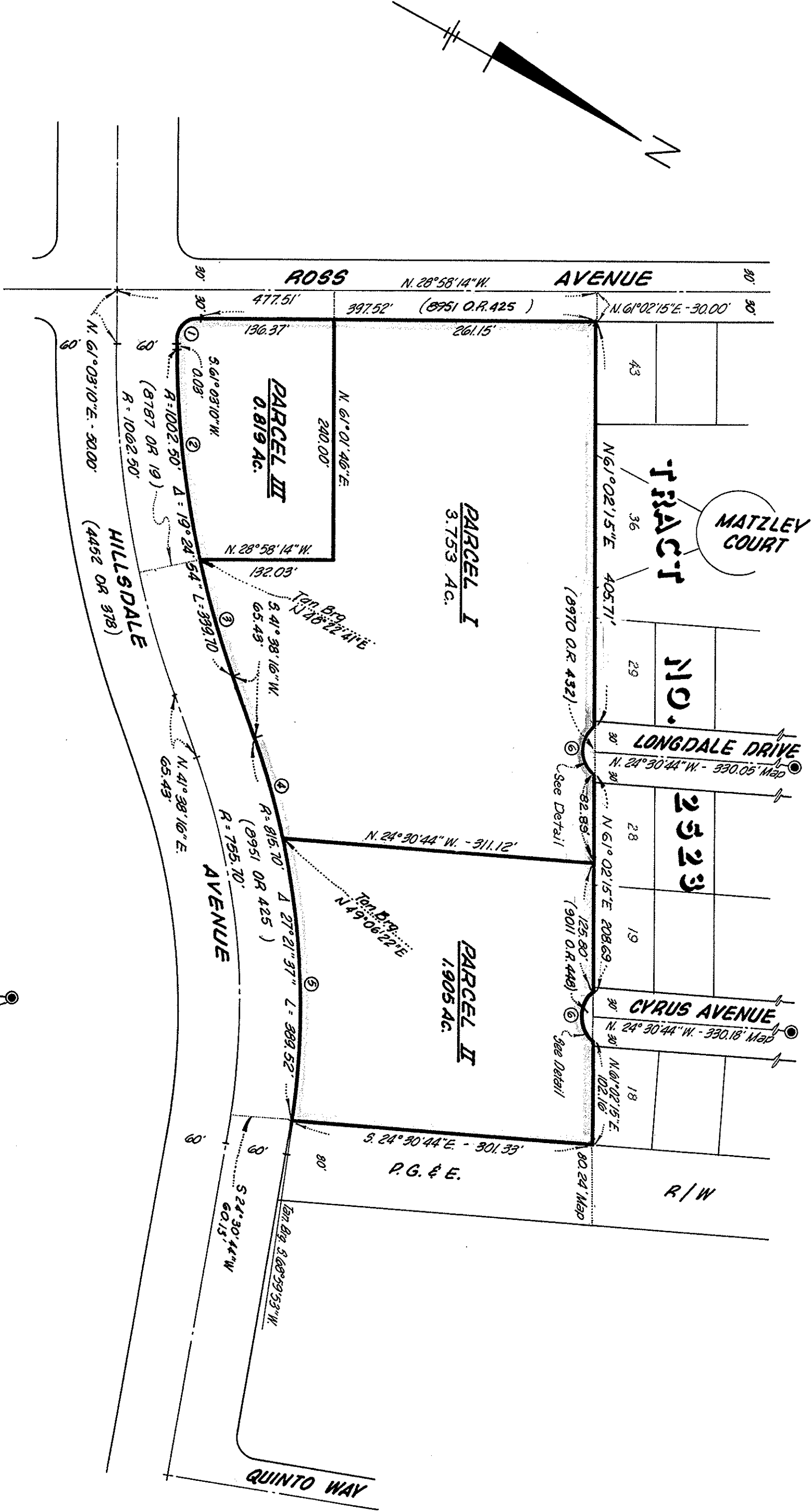
The bearing N 61° 02' 15" E. of the Southeasterly line of Tract No. 2523, Carolyn Square, recorded in Book 113 of Maps, page 19, Santa Clara County Records, was taken for the basis of all bearings shown on this map.

NOTES:

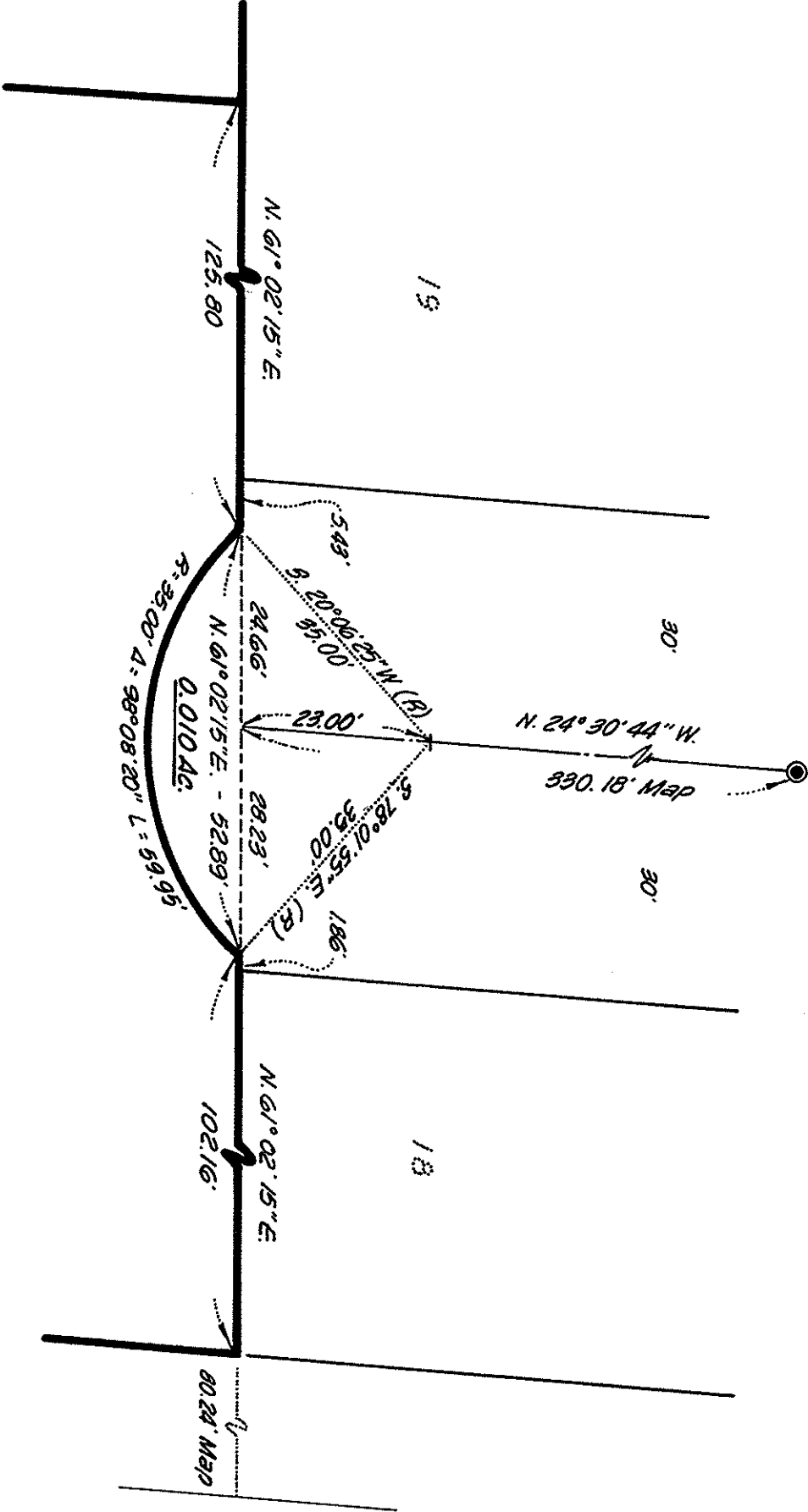
All distances shown hereon are in feet and decimals thereof.

LEGEND

—●— Indicates Concrete City Street Improvement from record data.



Nº	R	Δ	L
①	20.00	89° 53' 36"	31.41'
②	1002.50	12° 40' 29"	221.77'
③	1002.50	6° 44' 25"	117.93'
④	815.70	7° 28' 06"	106.32'
⑤	815.70	19° 53' 31"	283.20'
⑥	35.00	98° 08' 20"	59.95'



DETAIL AT CYRUS AVENUE
AND LONGDALE DRIVE

SCALE: 1"=20'