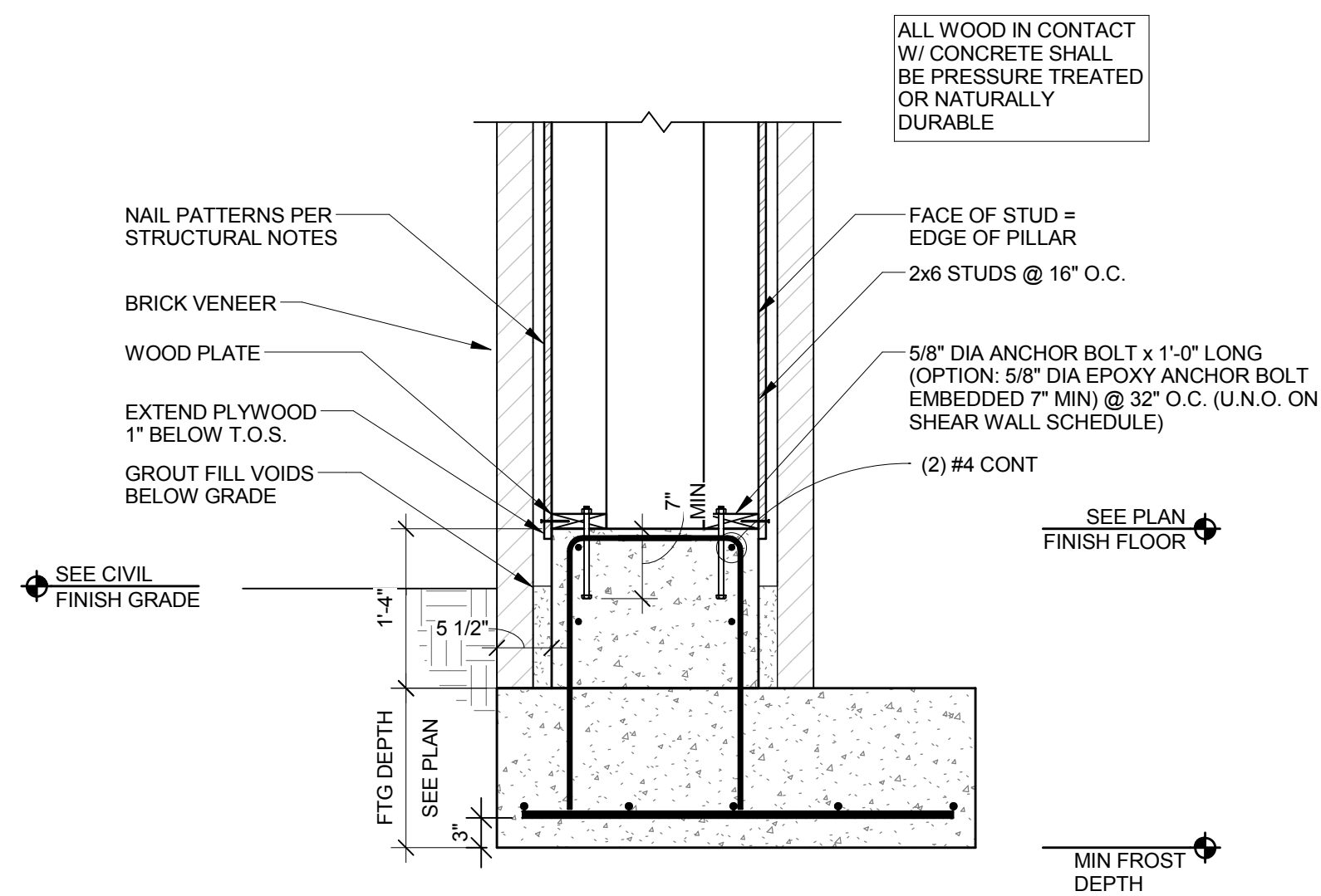


3/7/2018 11:29:20 AM

A4 PILLAR FOOTING
3/4" = 1'-0"



Chick-fil-A
5200 Buffington Road
Atlanta, Georgia 30349-2998

INTERPLAN

ARCHITECTURE
ENGINEERING
INTERIOR DESIGN
PROJECT MANAGEMENT
604 COURTLAND STREET
SUITE 100
ORLANDO, FLORIDA 32804
PH 407.645.5008
FX 407.629.9124



BRITT, PETERS
ASSOCIATES
INC.

consulting engineers
999 WATERSIDE DRIVE
SUITE 2002
NORFOLK, VA 23510
PH 757.965.5710
BP# 171143

SEAL: THIS DOCUMENT IS "NOT FOR CONSTRUCTION"
UNLESS THE ARCHITECT'S OR ENGINEER'S
SIGNATURE AND SEAL APPEAR BELOW:

CHICK-FIL-A

Cherokee Place FSR

115 Cherokee Place, Cartersville, GA 30121

FSU# 00534

REVISION SCHEDULE
NO. DATE DESCRIPTION

ENGINEER'S PROJECT # 171143
PRINTED FOR BID
DATE December 7, 2017
DESIGNED BY WBU
DRAWN BY JNJ

Information contained on this drawing and in all digital files
produced for above named project may not be reproduced in
any manner without express written or verbal consent from
authorized project representatives.

SHEET
SECTIONS & DETAILS

SHEET NUMBER

S-404