

CORNER RECORD

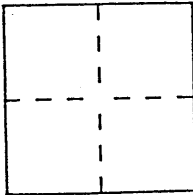
00-56 11 Cr 056

Document Number 359

City of Oakland

County of Alameda, California

Brief Legal Description Lot 32, Block "J", Country Club Park Unit No. 1, recorded in Book 17 of Maps, pages 128 & 129.



CORNER TYPE

Government Corner ☐ Control ☐
 Meander ☐ Property ☐
 Rancho ☐ Other ☐
 Date of Survey _____

COORDINATES (Optional)

N. _____
 E. _____
 Zone _____ Datum _____
 Elev. _____

Corner — Left as found ☐ Found and tagged ☐ Established ☐ Reestablished ☐ Rebuilt ☐

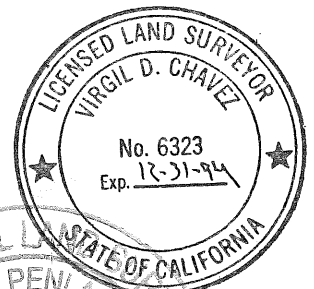
Identification and type of corner found: Evidence used to identify or procedure used to establish or reestablish the corner:
Used existing Standard City monuments found on Hellman Street as shown on sheet 2
to establish lot corners of Lot 32, based in part on Tract 1812, which resubdivided
portion of Block "J".

A description of the physical condition of the monument as found and as set or reset:
Set 5/8" rebar with cap, LS 6323 at Lot corners, shown thus

SURVEYOR'S STATEMENT

This Corner Record was prepared by me or under my direction in conformance with
 the Land Surveyors' Act on December 10 1993.

Signed Virgil D. Chavez (L.S. or R.C.E. Number 6323)

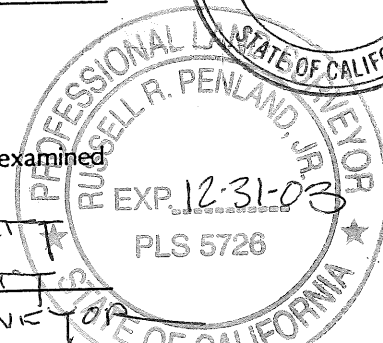


COUNTY SURVEYOR'S STATEMENT

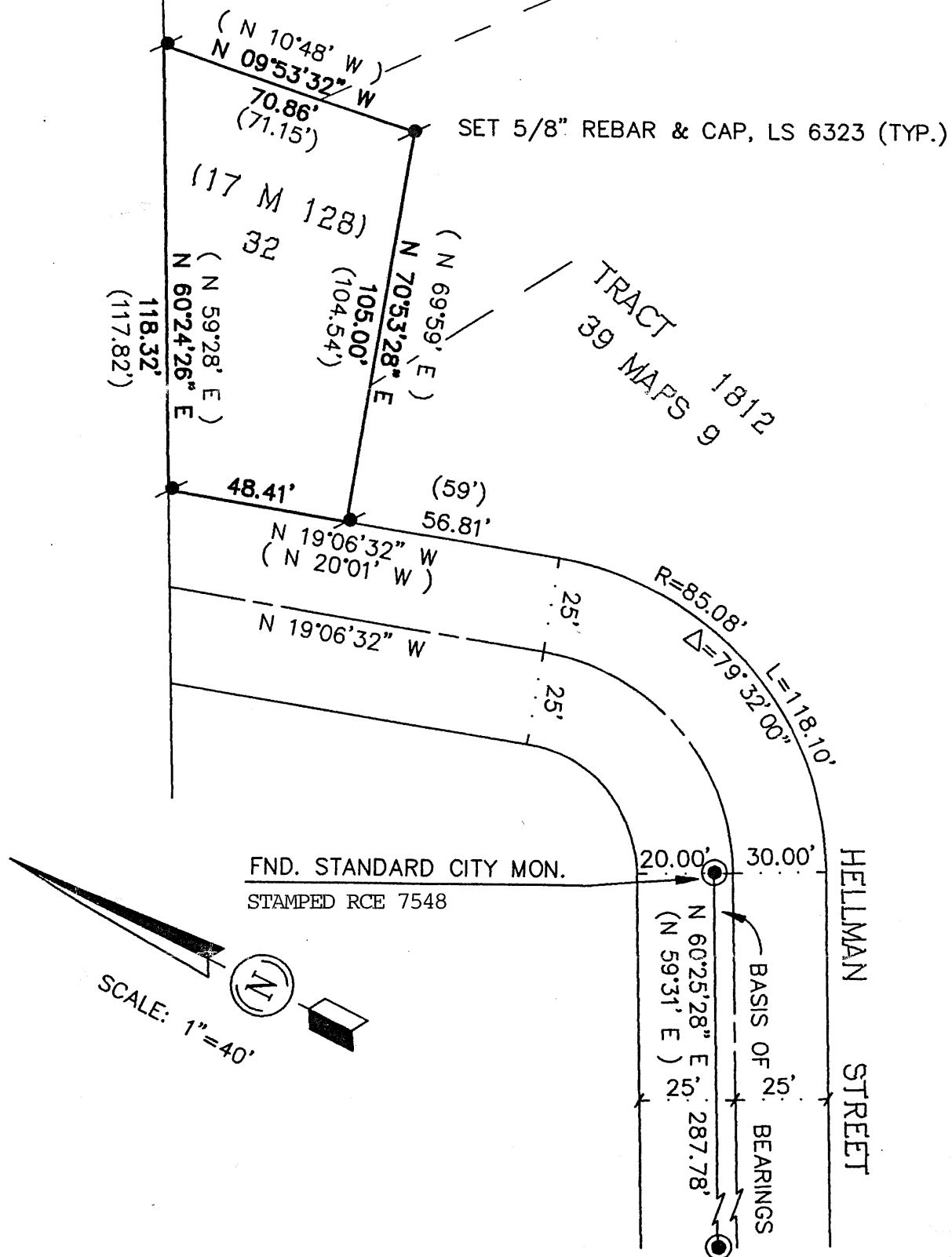
This Corner Record was received 12-21- 1993 and examined

and filed 4-10-192000 DEPUTY

Signed Russell R. Penland, Jr. Title COUNTY SURVEYOR



County Surveyor's Comment SINCE THIS CORNER RECORD ESTABLISHES ONE OR MORE POINTS OR LINES NOT SHOWN ON ANY SUBDIVISION MAP, OFFICIAL MAP, OR RECORD OF SURVEY, THE COUNTY SURVEYOR IS OF THE OPINION THAT A RECORD OF SURVEY SHOULD ALSO BE FILED. SEE SECTION 8762(c) OF THE LAND SURVEYORS' ACT.



(XX) RECORD DATA PER 17 M 128