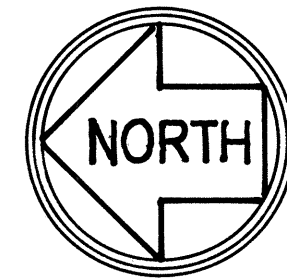


*BASIS OF BEARINGS:
CENTER LINE OF BLACK AVENUE WAS TAKEN AS N89°51'W.
BUILDING SET-BACK LINES:
BUILDING SET-BACK LINES TO BE AS REQUIRED BY THE CITY
OF PLEASANTON ZONING ORDINANCE.*

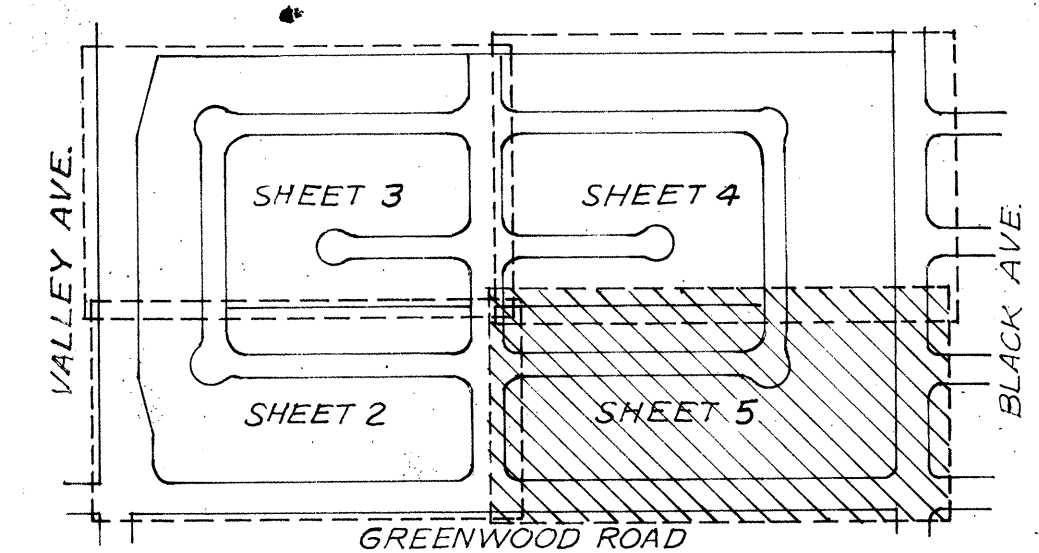
LEGEND:
STANDARD CONCRETE CITY MONUMENTS TO BE
INSTALLED SHOWN THUS:-----○
EXISTING MONUMENTS SHOWN THUS:-----●
PUBLIC SERVICE EASEMENTS DESIGNATED "P.S.E."

NOTE:
CROSSES CUT ON LOT SIDELINES EXTENDED.
OFFSET 9.75' FROM \varnothing FOR 60' STREET.
OFFSET 4.75' FROM \varnothing FOR ALL OTHER STREETS.



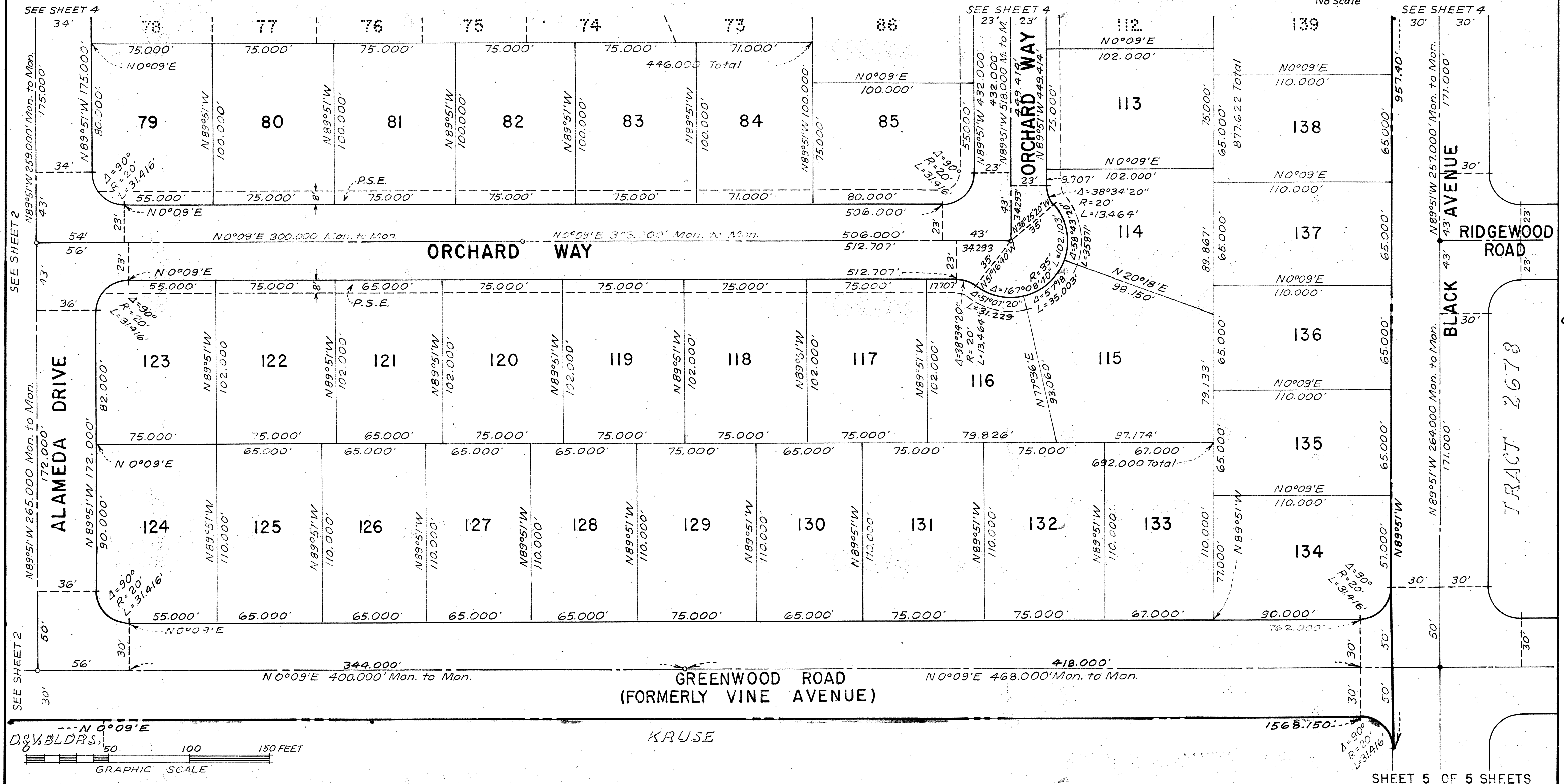
TRACT 2721
PLEASANTON VALLEY—UNIT 5
CITY OF PLEASANTON
ALAMEDA COUNTY, CALIFORNIA

MARTIN & BISSELL
CIVIL ENGINEERS
JUNE 1965
SCALE: 1" = 40'



KEY MAP

No Scale



TR.
2721

TRACT 2678

SHEET 5 OF 5 SHEETS