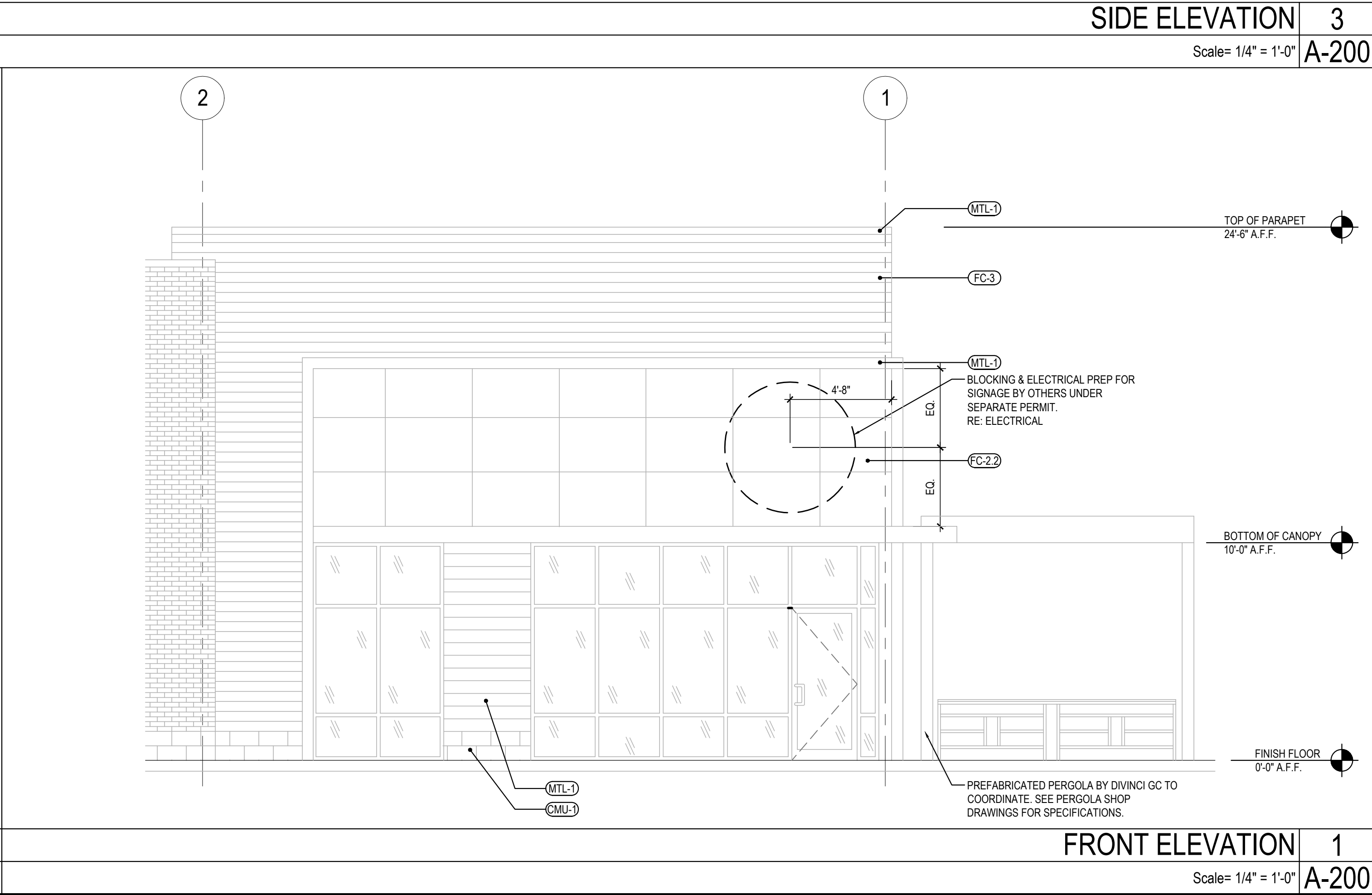
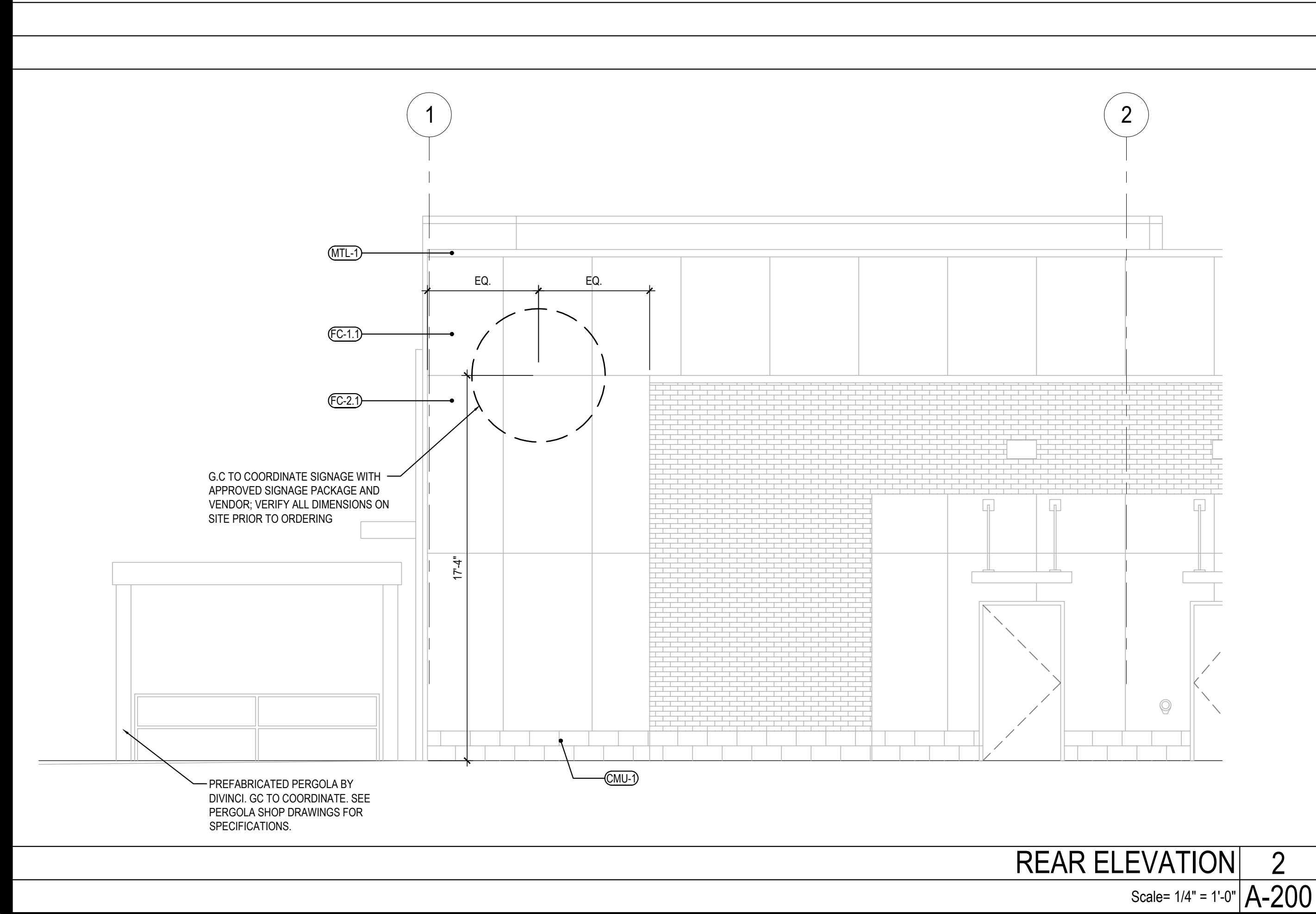
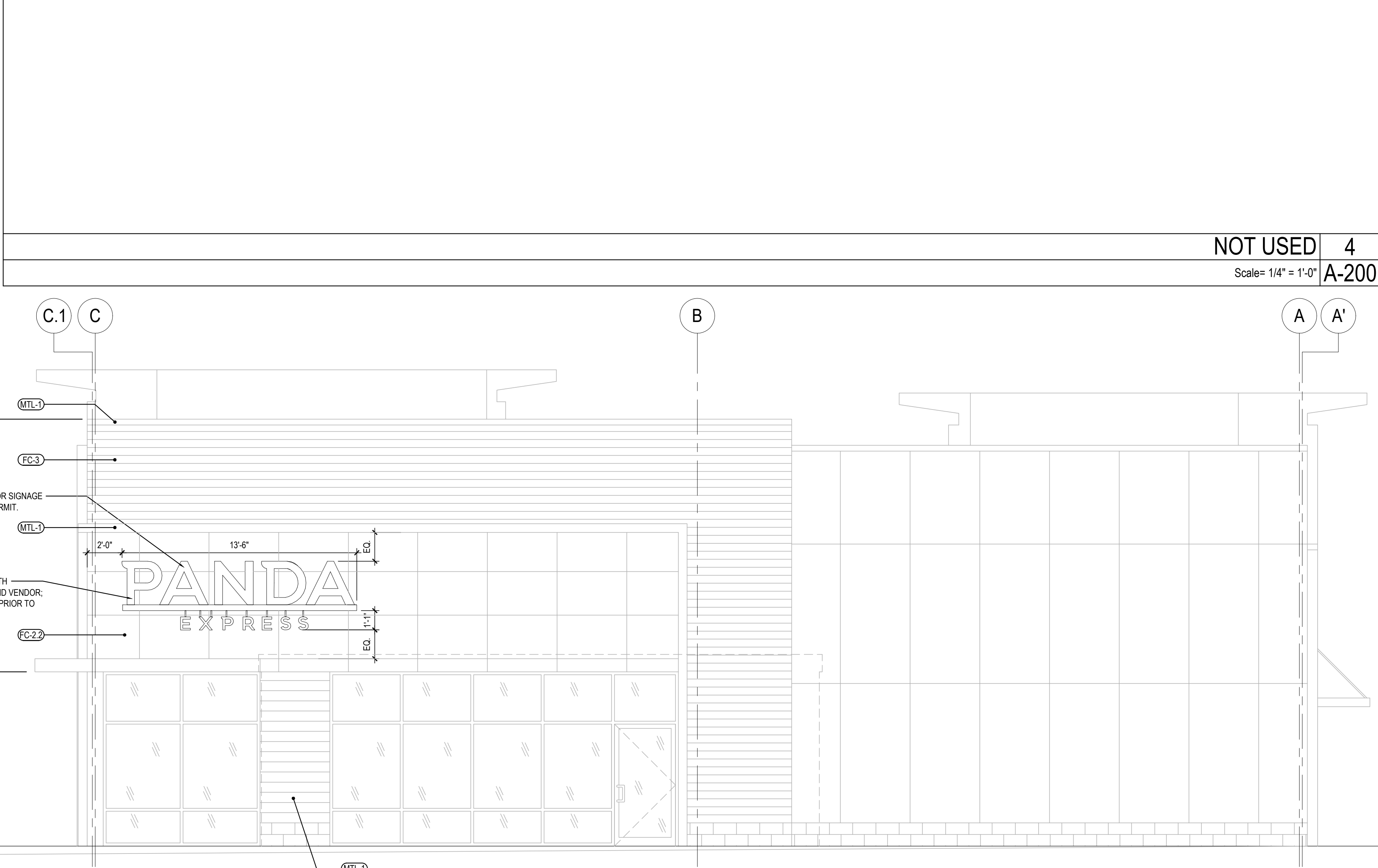


EXTERIOR MATERIAL LEGEND					INSTALLED AND FURNISHED BY G.C. UNLESS NOTED OTHERWISE
CODE	MATERIAL	MANUFACTURER	DESCRIPTION		LOCATION/REMARKS
			PRODUCT	COLOR	
BRK-1	BRICK	GLEN GERY BRICK	THIN TECH	SILVER BROOK	USE ARGOS GROUT, COLOR - SAVANNAH IVORY
BRK-2	BRICK	GLEN GERY BRICK	THIN TECH	BLACK TONE	USE ARGOS GROUT, COLOR - PORCELAIN
CA-1	PRE-FINISHED METAL	MAPES	CANOPY- CANTILEVERED	DARK BRONZE	
CA-2	PRE-FINISHED METAL	MAPES	CANOPY W/ HANGER RODS	DARK BRONZE	
CMU-1	CMU - GROUND FACE	WESTBROOK	GROUND FACE - SHAPE 2" 1F	608	2 COURSES (16"), LOCATED ON EXTERIOR PERIMETER
FC-1.1	FIBER CEMENT, 4' X 8' PANELS	CEMENT BOARD FABRICATIONS (CBF)	SILBONIT	STONE NATURAL	APPLIED VERTICALLY
FC-1.2	FIBER CEMENT, 16" X 8' PANELS	CEMENT BOARD FABRICATIONS (CBF)	SILBONIT	STONE NATURAL	APPLIED HORIZONTALLY
FC-2.1	FIBER CEMENT, 4' X 8' PANELS	CEMENT BOARD FABRICATIONS (CBF)	SILBONIT	ASH NATURAL	APPLIED VERTICALLY
FC-2.2	FIBER CEMENT, 2'-6" X 4' PANELS	CEMENT BOARD FABRICATIONS (CBF)	SILBONIT	ASH NATURAL	APPLIED HORIZONTALLY
FC-3	FIBER CEMENT, 5.4' X 20' PANELS	FIBERON	HORIZON	TUDOR BROWN	APPLIED HORIZONTALLY
MTL-1	METAL	PAC-CLAD		DARK BRONZE	WALL: 7" FLUSH PANELS, ACCENT BAND: BREAK METAL, COPING: MATCH FINISH
MTL-2	METAL	PAC-CLAD		MEDIUM BRONZE	WALL: 10" VERTICAL BATTEN SEAM PANELS



PANDA EXPRESS, INC.  
1683 Walnut Grove Ave.  
Rosemead, California  
91770  
Telephone: 626.799.9898  
Facsimile: 626.372.8288

All ideas, designs, arrangement and plans indicated or represented by this drawing are the property of Panda Express Inc. and were created for use on this specific project. None of these ideas, designs, arrangements or plans may be used by or disclosed to any person, firm, or corporation without the written permission of Panda Express Inc.

REVISIONS:	

ISSUE DATE:	
LANDLORD REVIEW	03-04-2022
FINAL LANDLORD REV.	06-20-2022
PERMIT	07-19-2022
BID SET	10-06-2022
CONSTRUCTION SET	01-16-2023

DRAWN BY: AB

PANDA PROJECT #: D7861  
ARCH PROJECT #: JCOT21-0268

I certify that these documents were prepared or approved by me, and that I am a duly licensed architect/engineer under the laws of the State of Maryland, license number 20249, expiration date 2/10/2024.



PANDA EXPRESS  
TRUE WARM & WELCOME  
10300 Mill Run Circle  
Owings Mills, MD 21117

A-200  
EXTERIOR ELEVATIONS

TRUE WARM & WELCOME 2300 R6 RR

CONSTRUCTION SET  
01-16-2023