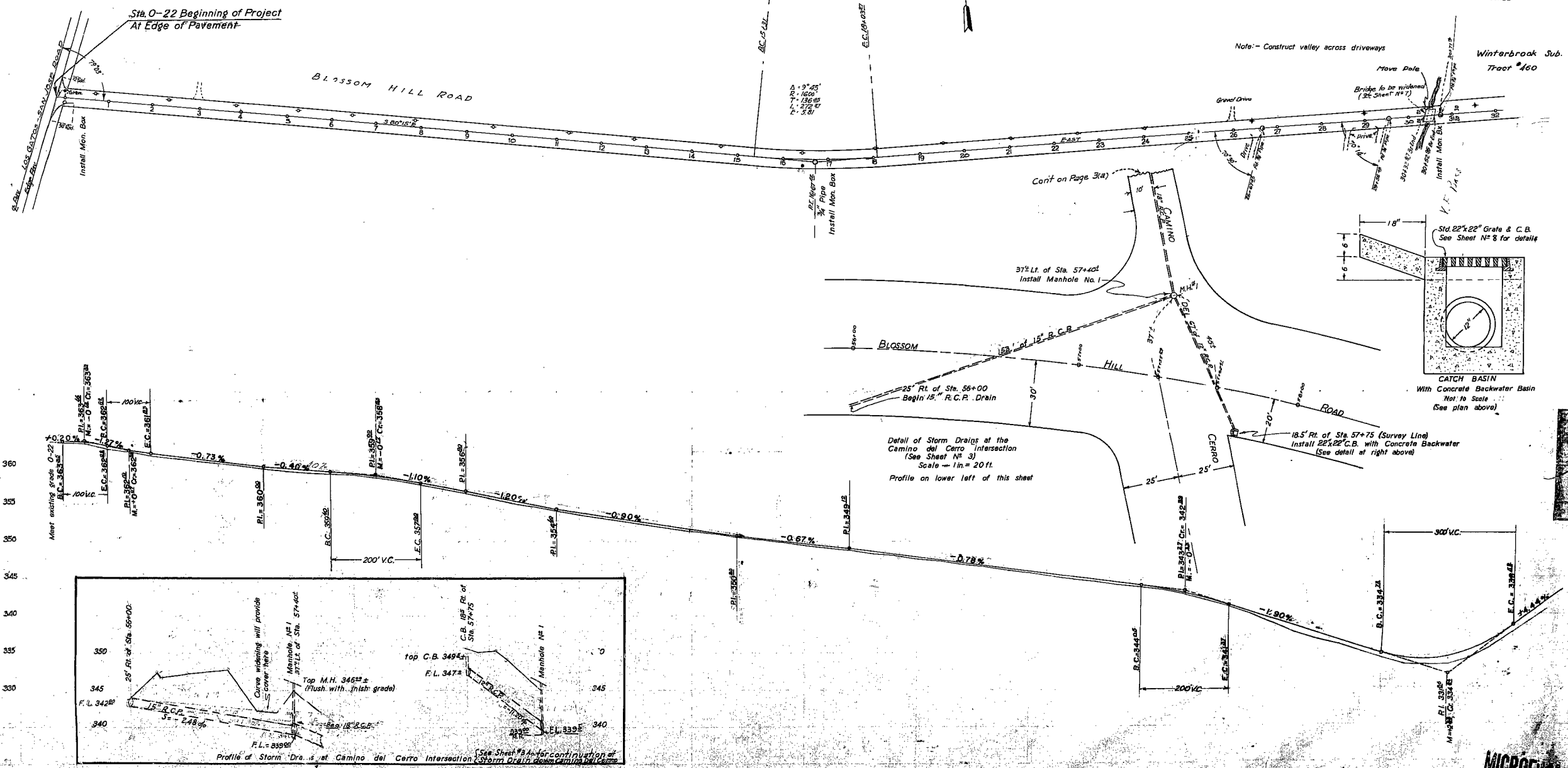
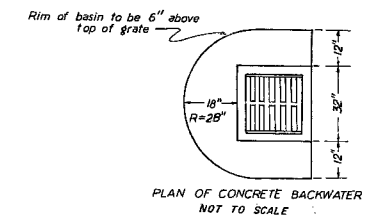


- POLE LEGEND
- Telephone Pole
 - Power Pole
 - Joint Pole
 - Anchor Pole



MICROFILM

3594

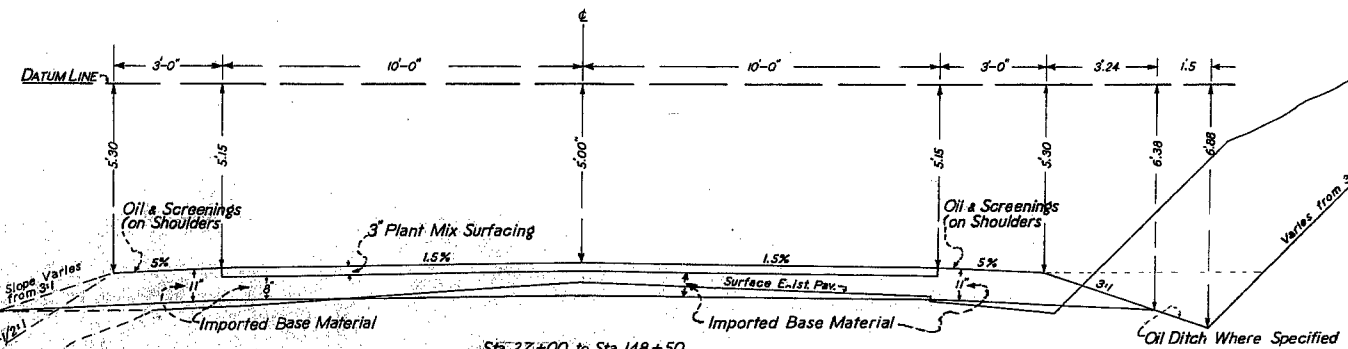
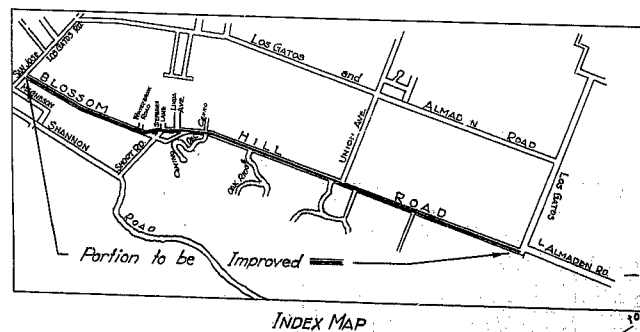
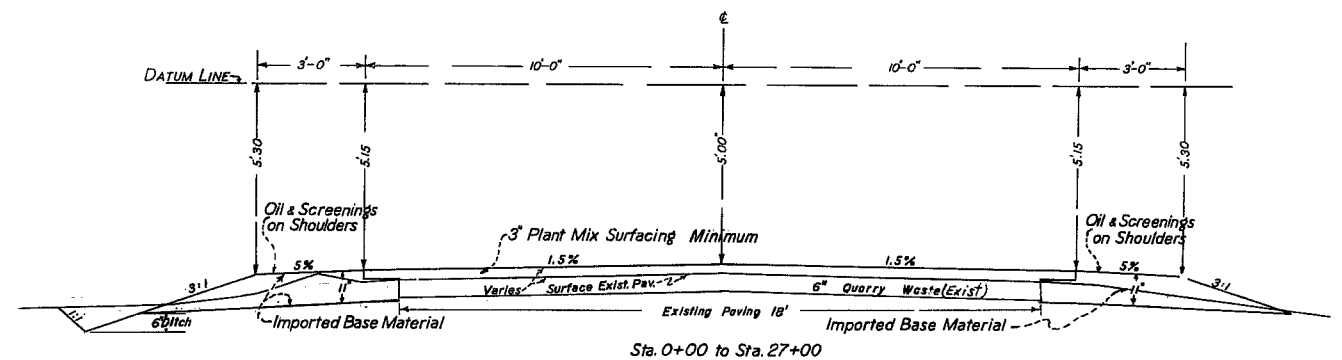
BLOSSOM HILL

PLAN
FOR THE IMPROVEMENT OF
BLOSSOM HILL ROAD
From San Jose - Los Gatos Rd. to Los Gatos - Almaden Rd.
IN
THE COUNTY OF SANTA CLARA

March, 1951

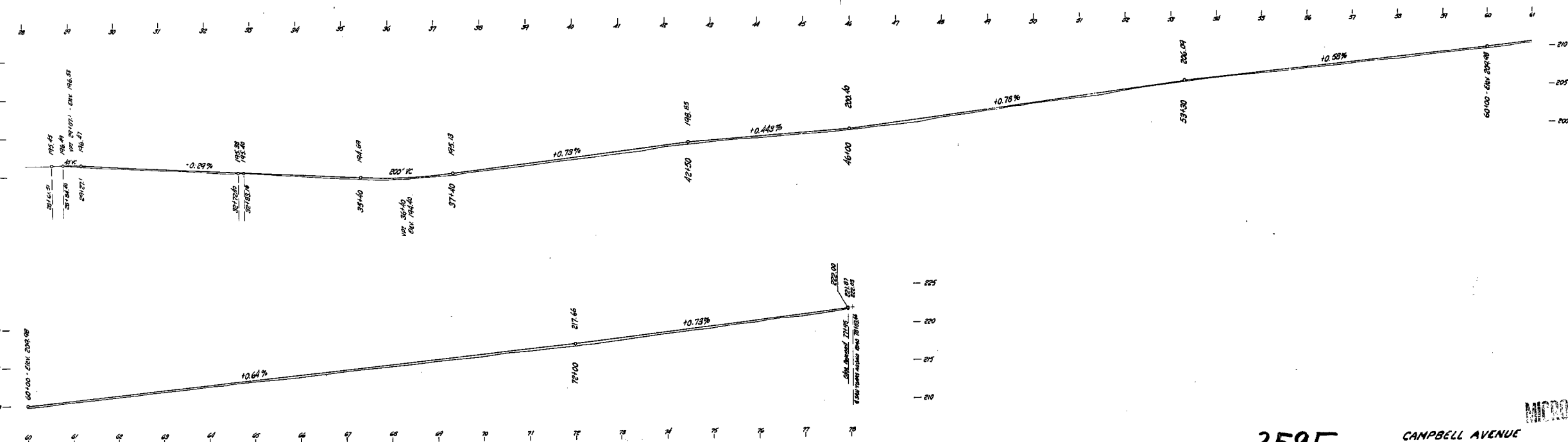
ROBERT B. CHANDLER
County Surveyor

Scales
Plan: 1"=100'
Profile:
Horiz: 1"=100' Vert: 1"=6'
Cross Sect: 1"=5'

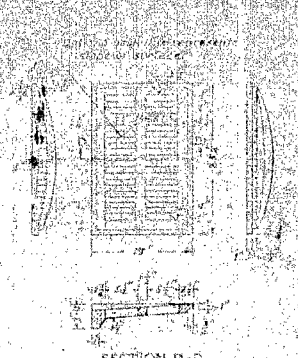


TYPICAL SECTIONS
Scale: 1/2"=1'

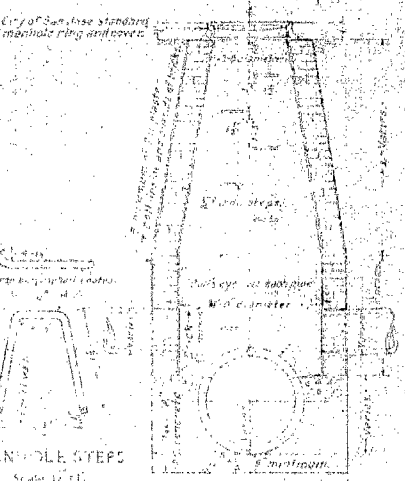
MICROFILM



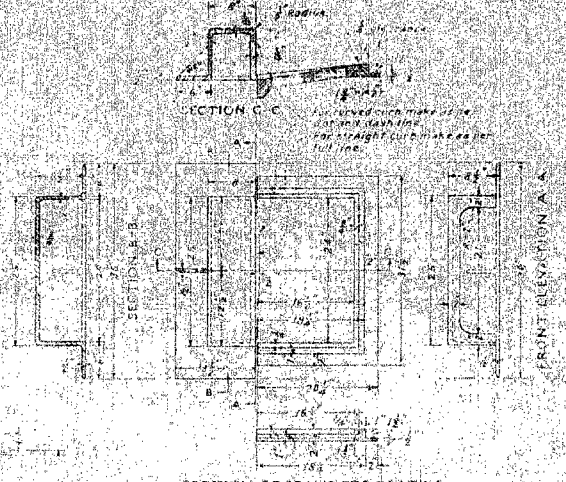
3595 CAMPBELL AVENUE
FROM SAN TOMAS AQUINO CIRC. TO SAN TOMAS AQUINO ROAD
Sheet 2 of 7 sheets 3595



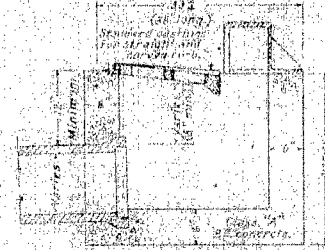
SECTION D-D
DETAIL OF GRATING
Scale: 1/2"



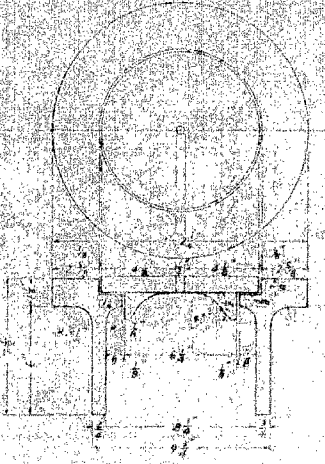
CROSS SECTION OF
STANDARD MANHOLE
Scale: 1/2"



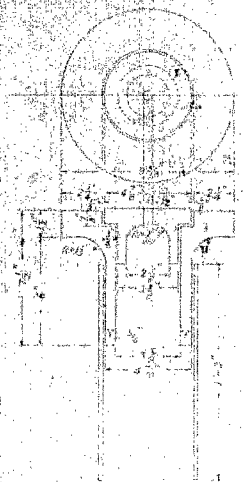
SECTION OF FRAME FOR GRATING
DETAIL OF CAST IRON TOP
Scale: 1/2"



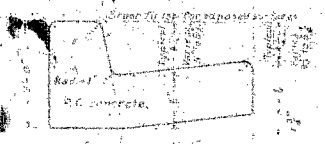
STANDARD DROP-INLET
TYPE NO. 2
Scale: 1/2"



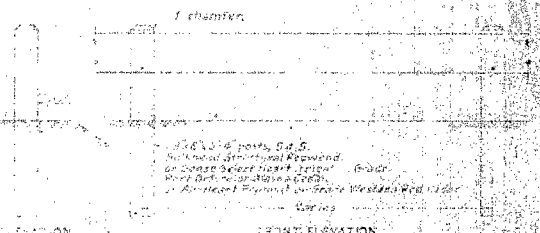
No. 1 MONUMENT BOX
Scale: 3/4"
Monument box to be constructed of cast iron.
This box to be set in iron pipe sleeve 10" inside
diameter and 150" long.



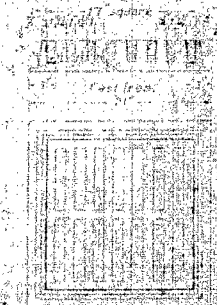
No. 2 MONUMENT BOX
Scale: 3/4"
Monument box to be constructed of cast iron.
This box to be set in iron pipe sleeve 10" inside
diameter and 150" long.



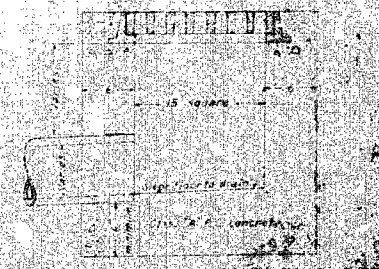
STANDARD CURB AND GUTTER
Scale: 1/2"



METAL GUARD RAIL
Scale: 1/2"



STANDARD 17 INCH GRATE AND DRAIN
Scale: 1/2"



STANDARD 17 INCH GRATE AND DRAIN
Scale: 1/2"

STANDARD 17 INCH GRATE AND DRAIN
TYPE NO. 1
COUNT 3595

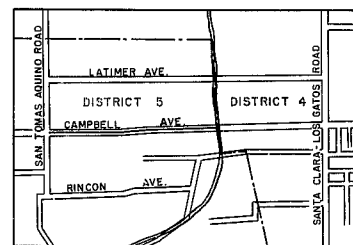
STANDARD 17 INCH GRATE AND DRAIN
TYPE NO. 1
COUNT 3595

PLAN FOR THE IMPROVEMENT OF CAMPBELL AVENUE From San Tomas Aquino Creek to San Tomas Aquino Road in SANTA CLARA COUNTY

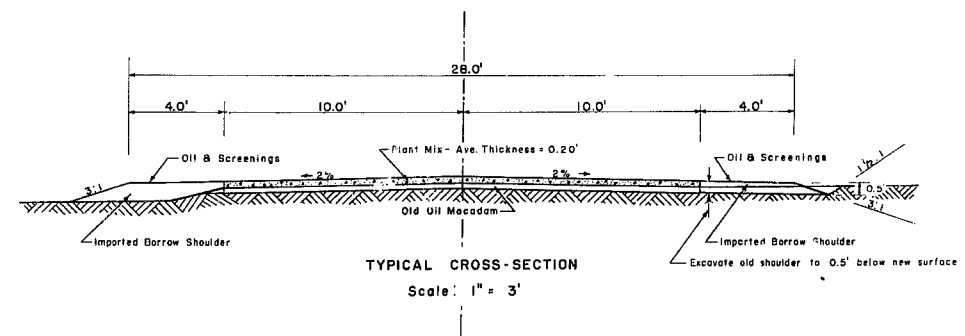
November, 1950

ROBERT B. CHANDLER
County Surveyor

SCALES
Plan : 1" = 100'
Profile
Horiz : 1" = 100'
Vert : 1" = 6'
Cross-sect:
1" = 5'



INDEX MAP



MICROFILM

3595

CAMPBELL AVENUE
FROM SAN TOMAS AQUINO CREEK TO SAN TOMAS AQUINO ROAD
3595