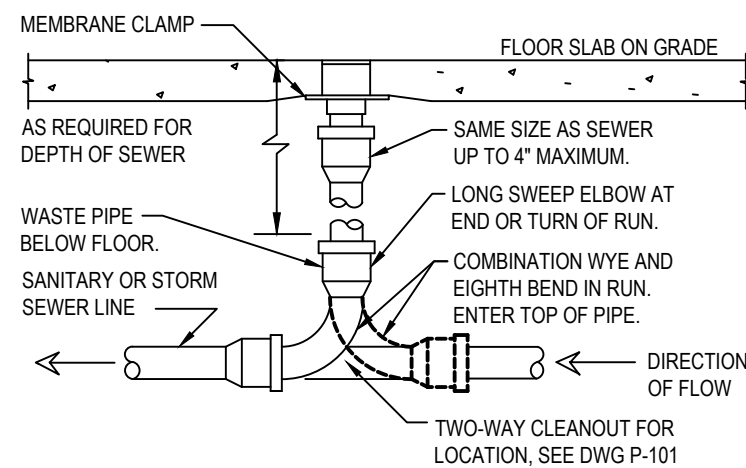


- NOTE:
1. ROUTE PIPE INCONSPICUOUSLY AND UNOBTUSIVELY.
 2. HANG PIPE AS REQUIRED.
 3. DO NOT INSULATE INDIRECT DRAIN PIPE WHEN INSTALLED IN FOOD SERVICE FACILITY. REFER TO LOCAL CODES FOR FURTHER INFORMATION.

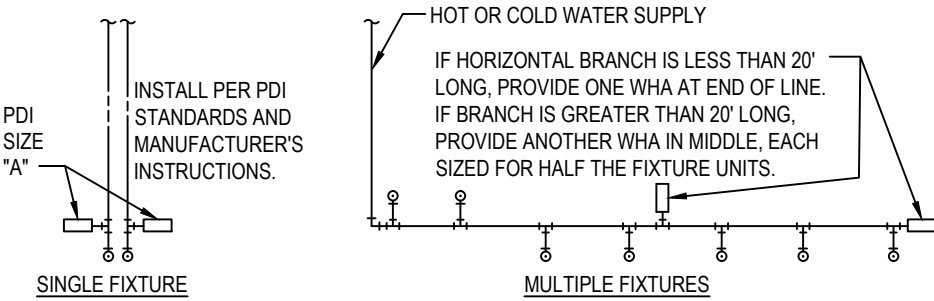
INDIRECT DRAIN		9
Scale: NO SCALE		P-500

PROVIDE ROUND SECURED NICKEL BRONZE ADJUSTABLE TOP WITH "CO" CAST IN COVER. PROVIDE CLEANOUT TOP WITH VARIATIONS SUITABLE FOR FLOOR COVERING (CARPET MARKER, RECESSED FOR TILE, SCORRIATED FOR UNFINISHED FLOORS). PROVIDE PLASTIC PLUG IN CAST IRON BODY. CLEAN THE TOP OF EXPOSED FCO AFTER INSTALLATION.



- NOTE:
1. LOCATE AT BUILDING EXIT, AT ENDS OF RUNS, AT TURNS OF PIPE GREATER THAN 45 DEGREES, AT 50' INTERVALS ON STRAIGHT RUNS, AND WHERE SHOWN ON PLANS.
 2. PROVIDE BACKFILL PER ARCHITECTURAL SPECIFICATIONS.
 3. LOCATE CLEANOUTS WHERE THERE IS 18" CLEAR AROUND.
 4. CONSULT LOCAL CODES FOR OTHER FCO REQUIREMENTS.

FLOOR CLEANOUT		10
Scale: NO SCALE		P-500

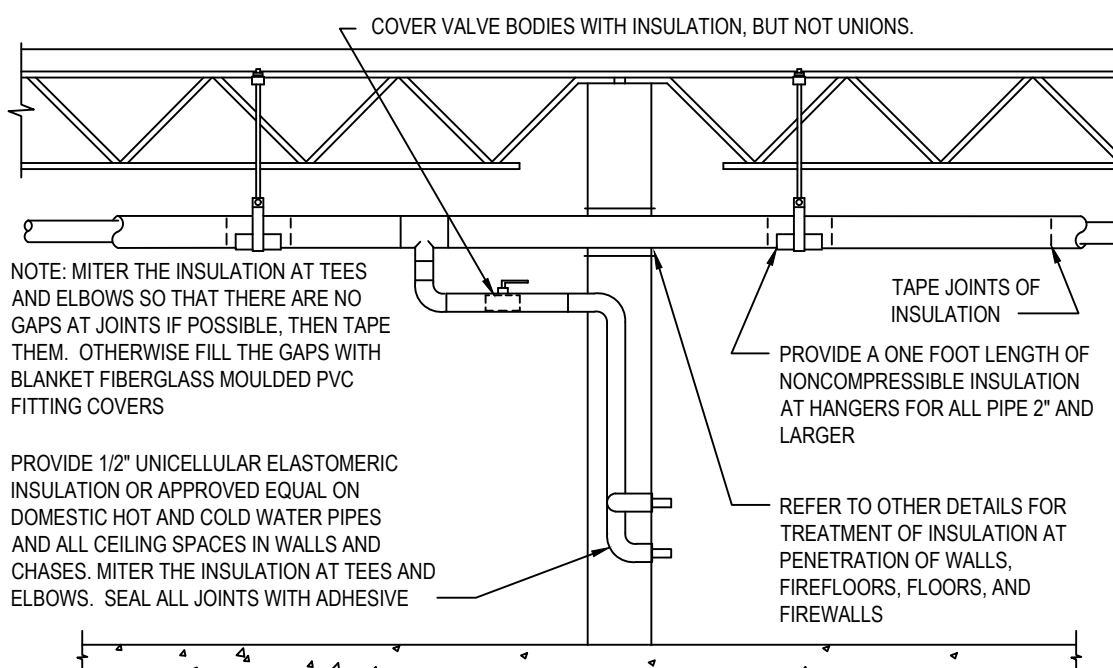


PDI SIZE	PIPE SIZE	FIXTURE UNIT LOAD
A	1/2"	1-11
B	3/4"	12-32
C	1"	33-60
D	1-1/4"	61-113
E	1-1/2"	114-154
F	2"	154-330

FIXTURE UNIT TABULATION		
FIXTURE	COLD	HOT
VALVE WATER CLOSET	10	--
TANK WATER CLOSET	5	--
URINAL	5	--
LAVATORY/SINK	1.5	1.5
JANITOR'S SINK	3	3
SHOWER/BATHTUB	2	2

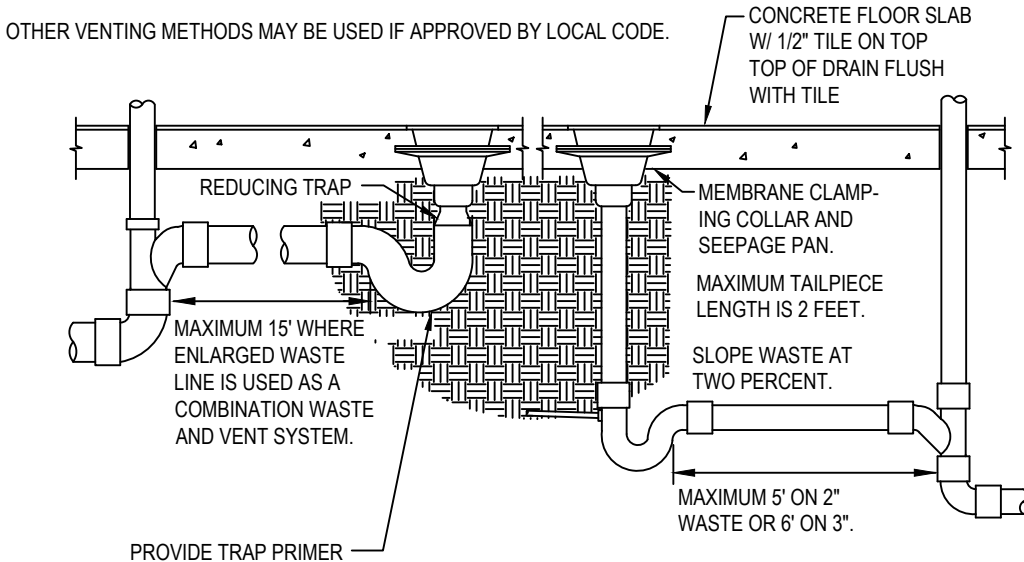
- NOTE:
1. DO NOT PROVIDE AIR CHAMBERS.
 2. PROVIDE WATER HAMMER ARRESTERS BY SIOUX CHIEF, PRECISION PLUMBING PRODUCTS, WATTS OR APPROVED EQUIVALENT WITH PISTON AND O-RING CONSTRUCTION, HAVING PDI #WH- 201, ASSE # 1010 AND ANSI # A112.26.1M CERTIFICATION.
 3. INSTALL IN HORIZONTAL OR VERTICAL POSITION, BUT NEVER UPSIDE DOWN.
 4. INSTALL IN LINE WITH WATER FLOW DIRECTION IF POSSIBLE.
 5. SIZE THE UNITS AS SHOWN ON THE DRAWINGS AND/OR PER THE TABLES SHOWN ABOVE.

WATER HAMMER ARRESTERS		11
Scale: NO SCALE		P-500



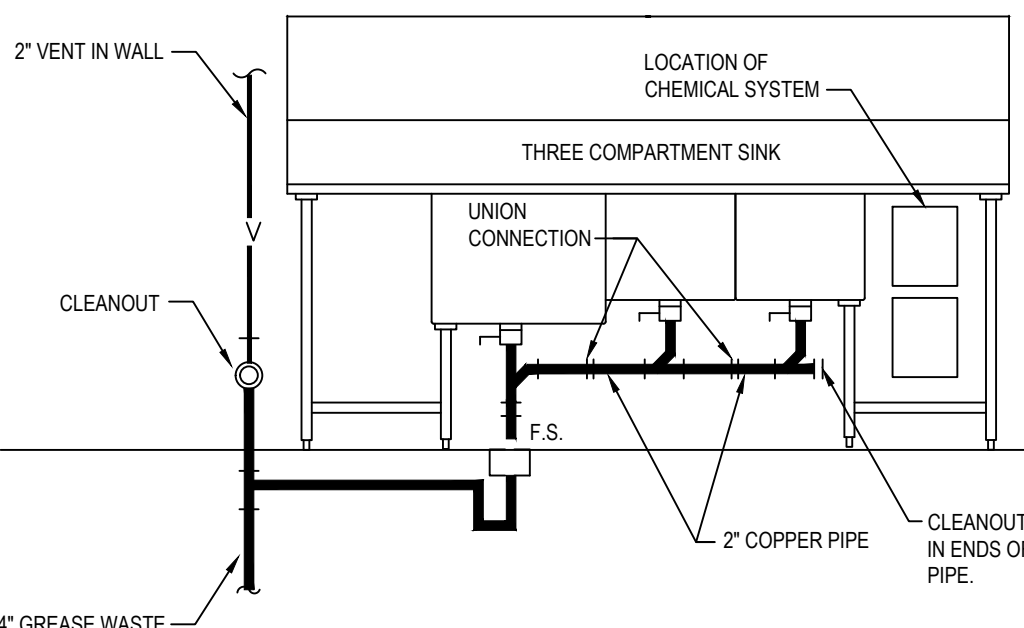
- NOTE:
1. PROVIDE 1/2" PLENUM RATED ELASTOMERIC INSULATION WITH ALL-SERVICE JACKET WITH VAPOR BARRIER OR APPROVED EQUAL ON ALL COLD WATER, CONDENSATE UP TO 2".
 2. PROVIDE 1" PLENUM RATED ELASTOMERIC INSULATION WITH ALL-SERVICE JACKET OR APPROVED EQUAL ON DOMESTIC HOT WATER PIPING.
 3. REFER TO SPECIFICATIONS FOR FURTHER INFORMATION REGARDING INSULATION. INSTALL ALL ITEMS PER SPECIFICATIONS AND MANUFACTURER'S INSTRUCTIONS.
 4. MAINTAIN VAPOR BARRIER ON COLD PIPING BY MEANS OF SEALANT AND TAPE.
 5. FLAME-SPREAD AND SMOKE-DEVELOPED INDEXES SHALL NOT EXCEED 25/50.
 6. SEAL EXPOSED ENDS OF INSULATION WITH ADHESIVE MASTIC.

PIPE INSULATION		12
Scale: NO SCALE		P-500



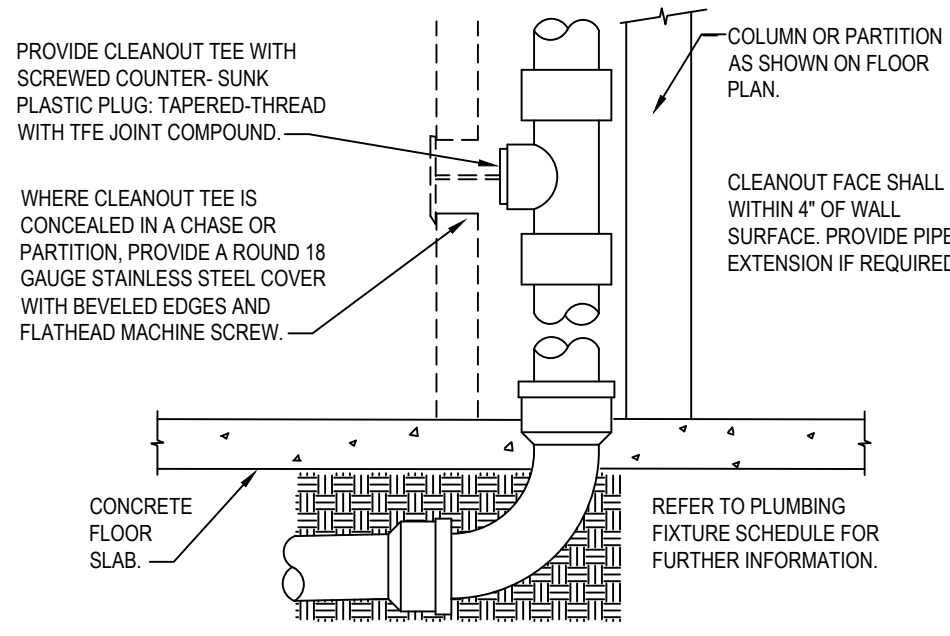
- NOTE:
1. LOCATE FLOOR DRAIN/SINK WHERE SHOWN ON DIMENSIONED ARCHITECTURAL PLAN. IF FLOOR STRUCTURE INTERFERES WITH FLOOR SINK, MOVE SIDEWAYS IF POSSIBLE, OTHERWISE MOVE BACK. ALWAYS LOCATE WHERE EASILY ACCESSIBLE, BUT NOT IN FOOT TRAFFIC.
 2. IF SITUATION IS FLOOR SLAB ON GRADE, PROVIDE BACKFILL PER SPECIFICATIONS. IF CONCRETE FLOOR IS NOT EXISTING, SET DRAIN IN PLACE AND POUR AROUND IT, OR BLOCK OUT AND POUR IN LATER.
 3. IF CONCRETE FLOOR IS EXISTING, SAW CUT OR CORE DRILL IT. SET DRAIN BODY IN PLACE AND POUR AROUND IT.
 4. TOP OF THE FLOOR SINK / DRAIN SHOULD BE SET AT THE SAME ELEVATION AS THE SLAB AND THEN DISHED OUT 1/2" AT THE DRAIN SLOPING TO NOTHING AT THE Z' RADIUS POINT.
 5. IF SITUATION IS FLOOR NOT ON GRADE, REFER TO FLOOR PENETRATION' DETAIL FOR VENTS.
 6. PROVIDE TRAP PRIMER FOR FLOOR DRAINS IN RESTROOMS.

FLOOR DRAIN/SINK		8
Scale: NO SCALE		P-500



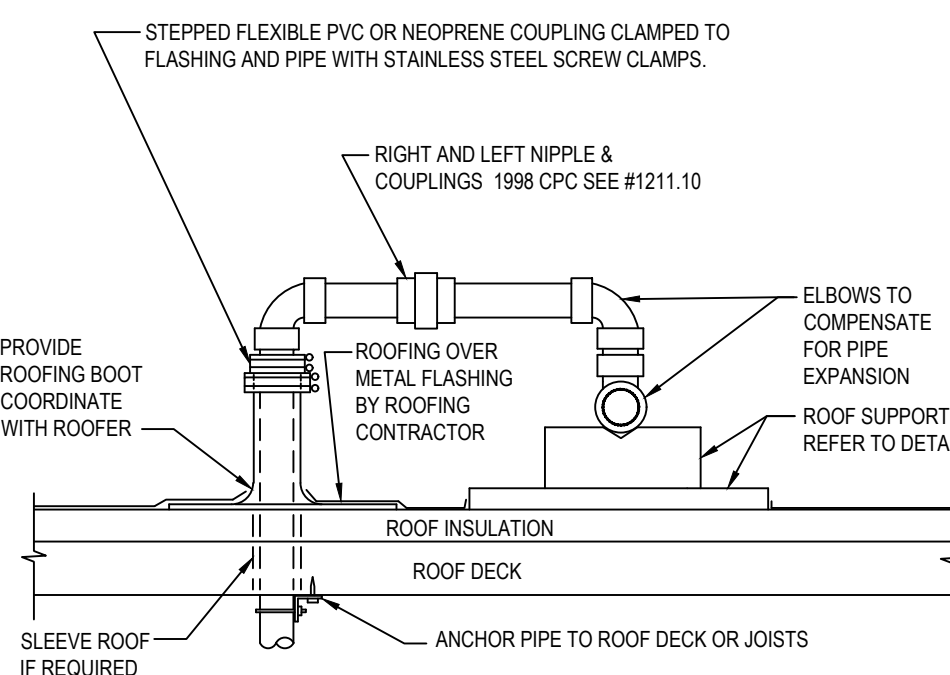
- NOTE:
1. ARRANGEMENT SHOWN IS SCHEMATIC. ADJUST TO SUIT FIELD CONDITIONS OR MEET LOCAL CODE REQUIREMENTS.
 2. PROVIDE COPPER PIPE, FITTINGS AND CONNECTORS ALL AROUND SINK AND TRAP.
 3. CONNECT TRAP FROM CENTER COMPARTMENT.

UTILITY/SINK		7
Scale: NO SCALE		P-500



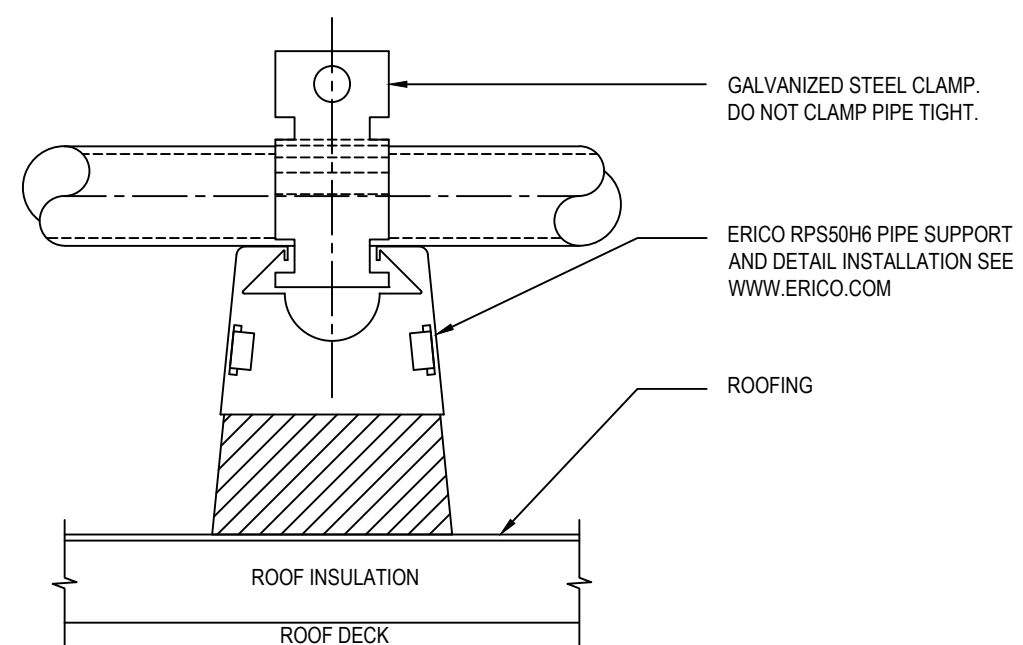
- NOTE:
1. PROVIDE WCO WHERE SHOWN ON PLAN. LOCATE ABOVE FIXTURE FLOOD RIM.
 2. CONSULT LOCAL CODES FOR OTHER WCO REQUIREMENTS.

WALL CLEANOUT		6
Scale: NO SCALE		P-500



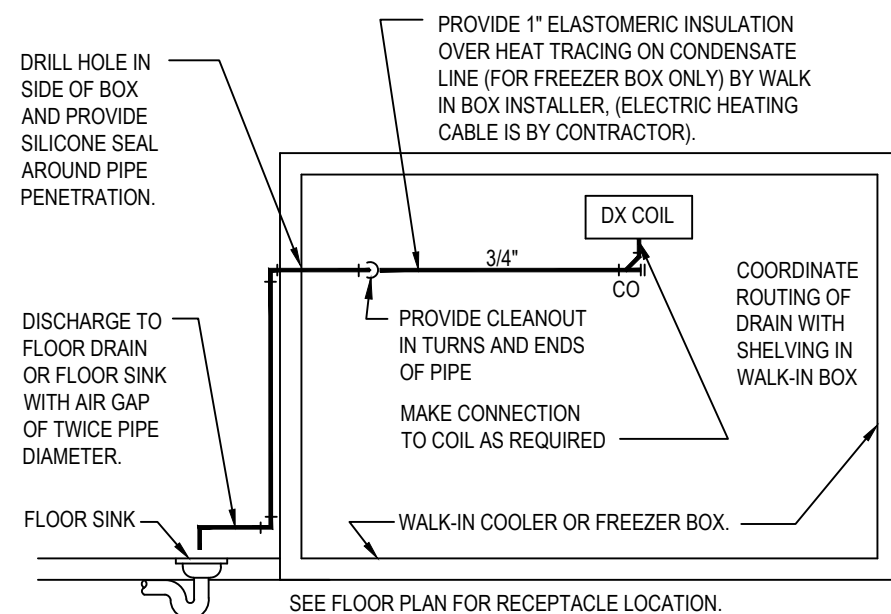
- NOTE:
1. REFER TO PLANS FOR PIPE SIZE(S) AND LOCATION(S).
 2. WELDED OR SCREWED FITTINGS AS SPECIFIED FOR PIPE SIZE.
 3. LOCATE PENETRATION MINIMUM 18" FROM ADJACENT WALLS.

GAS PIPE ROOF PENETRATION		5
Scale: NO SCALE		P-500



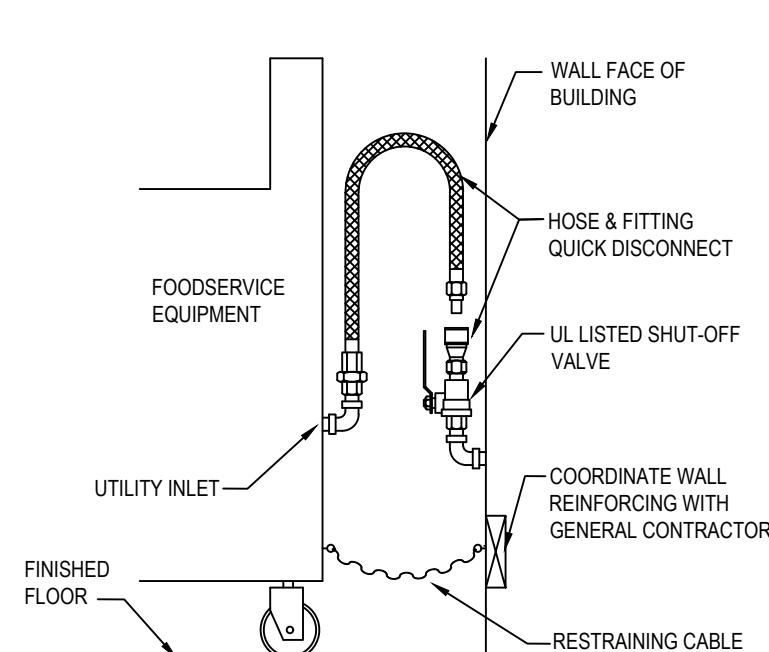
- NOTE:
1. LOCATE AT TURNS OF PIPE, AT 4' SPACING FOR PLASTIC PIPE, AND AT THIS SPACING FOR METAL PIPE. 5'-16" 4"-14" 3'-12" 2'-12" 1'-11" 2'-10" 1'-12" 9" 1'-14" 8" 1'-7" 3'-4" 6". PLACE BASE SHEETS ON ROOFING BEFORE GRAVEL IF ANY. SET BLOCKS FREE ON BASE SHEETS. STACK BLOCKS AND NAIL THEM TOGETHER WHERE REQUIRED TO ELEVATE PIPING.
 2. PRIMER COAT AND PAINT EXTERIOR GAS PIPE SAFETY YELLOW COLOR.
 3. 1/8"X1/2" THICK ROOF WALKWAY MATERIAL FOR BASE SHEET. ("CAREY-TRED" OR PER ARCHITECTURAL SPECIFICATIONS.)

ROOF PIPE SUPPORT		1
Scale: NO SCALE		P-500



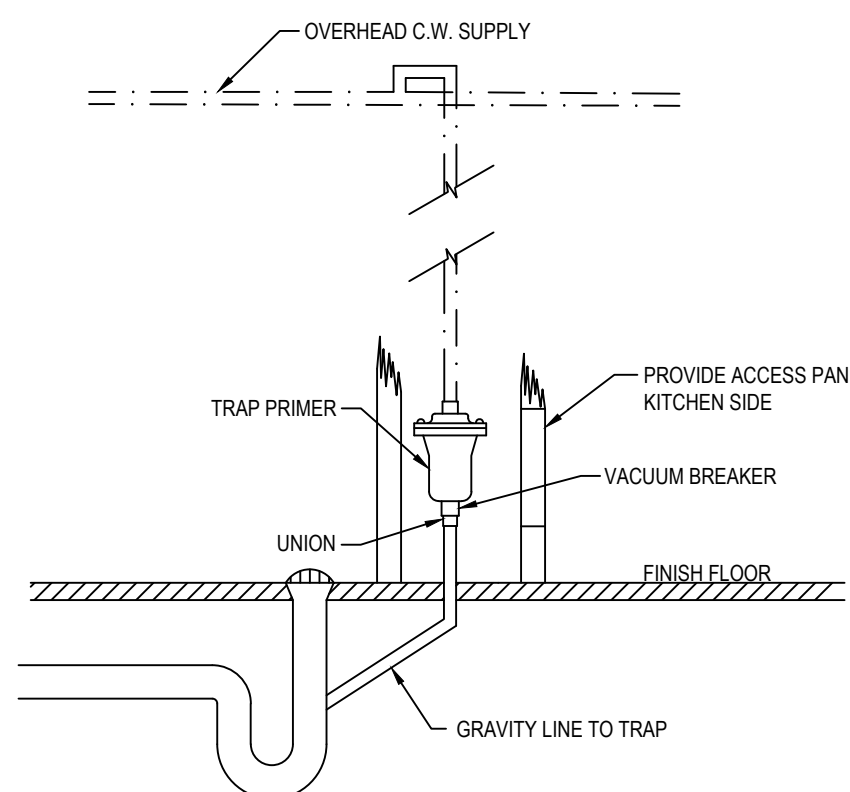
- NOTE:
1. INSTALL PIPE A MINIMUM OF 78" ABOVE FINISH FLOOR, ANCHORED TO WALL OF BOX WITH SUPPORTS AT MAXIMUM SIX FOOT CENTERS.
 2. USE TYPE "M" HARD COPPER TUBE AND FITTINGS WITH LEAD-FREE SOLDER JOINTS.
 3. SLOPE HORIZONTAL PIPE AT MINIMUM TWO PERCENT.
 4. KEEP DRAIN LINE FROM EVAPORATOR AS HIGH AS POSSIBLE UNDER THE EVAPORATOR BACK TO THE WALL TO MAXIMIZE SHELF SPACE UNDER THE COIL.
 5. REFER TO LOCAL CODE FOR INDIRECT DRAIN REQUIREMENTS.

WALK - IN BOX CONDENSATE DRAIN		2
Scale: NO SCALE		P-500



- NOTE:
1. IF UTILITY IS NOT AT FULL HEIGHT SHOWN, PROVIDE PIPING WITH ELBOWS TO RAISE INLET.

QUICK DISCONNECT		3
Scale: NO SCALE		P-500



TRAP PRIMER DETAIL		4
Scale: NO SCALE		P-500



PANDA RESTAURANT GROUP INC.
1683 Walnut Grove Ave.
Rosemead, California
91770
Telephone: 626.799.9898
Facsimile: 626.372.8288

All ideas, designs, arrangement and plans indicated or represented by this drawing are the property of Panda Express Inc. and were created for use on this specific project. None of these ideas, designs, arrangements or plans may be used by or disclosed to any person, firm, or corporation without the written permission of Panda Express Inc.

REVISIONS:

PLAN REVIEW COMMENTS	01/14/2022
----------------------	------------

ISSUE DATE:

1	95% SUBMITTAL	11/19/2021
2	100% SUBMITTAL	01/14/2022

DRAWN BY:

PANDA PROJECT #:

ARCH PROJECT #:



**MARSHALL & BOLLWERK
ENGINEERING, INC.**
8881 Highway 88, Suite 400
Woodstock, Ga., 30189
p: (678) 795-0333, f: (678) 325-4559
e: mbe@mbeinc.net



PANDA EXPRESS
SPACE 8126
EXCHANGE FOOD COURT
FT LEONARD WOOD, MO

P-500

PLUMBING DETAILS

BID SET (NOT FOR CONSTRUCTION) DATE: 2022/01/18